



Dyas Road, TW16

£1,700 Per calendar month

A modern two bedroom ground floor apartment with two bathrooms and two patio areas. The property has a bright and spacious feel with the added bonus of an allocated underground parking space and no forward chain.

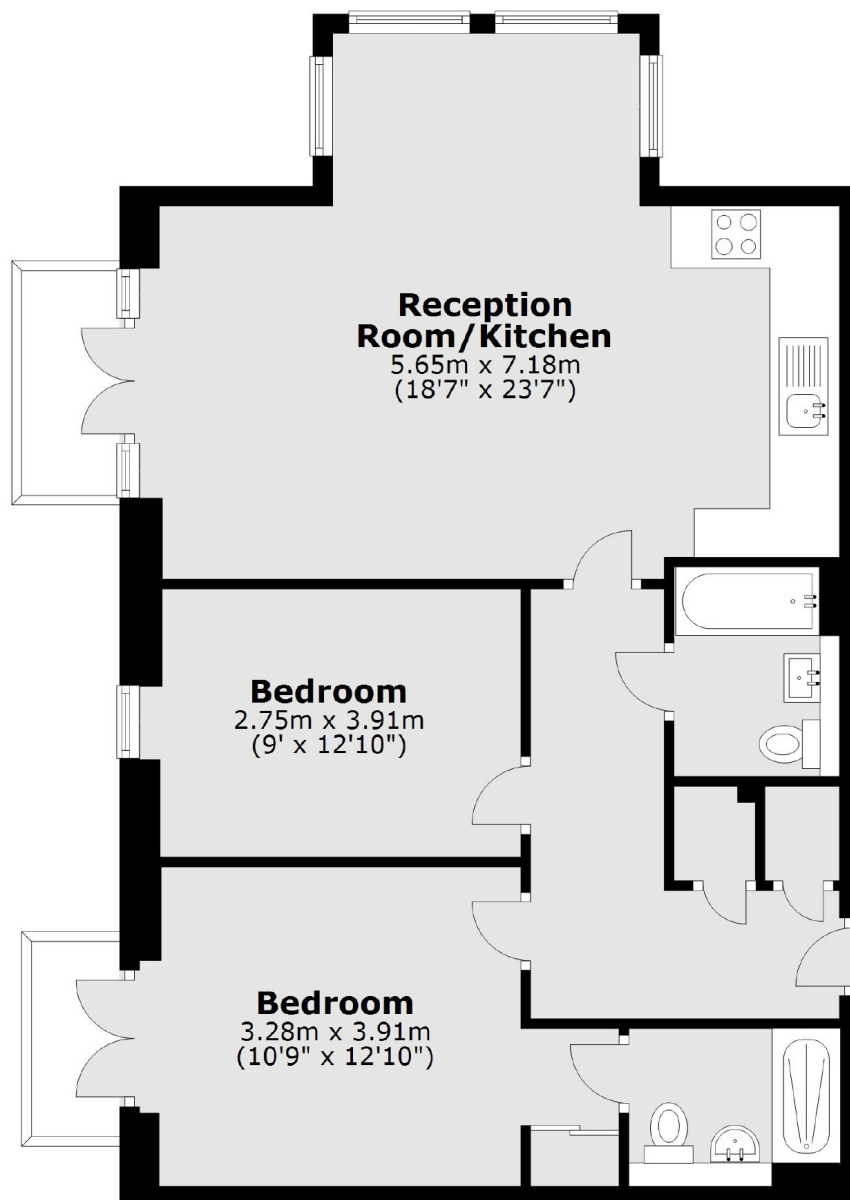
Built by Crest Nicholson in the heart of Lower Sunbury, Dyas Road is an amazing location! Sunbury Station, Sunbury Park, the 'Walled Garden' and the River Thames are all within half a mile.

Features

- Ground Floor
- Two Bedrooms
- Two Bathrooms
- Open Plan
- Allocated Underground Parking
- No Forward Chain

Dyas Road, Sunbury-On-Thames, TW16

Ground Floor



Total area: approx. 77.8 sq. metres (837.5 sq. feet)