



Ormond Crescent, TW12

£1,950,000

This is a house to get really excited about. Coming with a whopper of a South facing garden, tons of scope to extend (subject to planning permission), this detached property will make the perfect long term family home.

Located in the prestigious Ormond Crescent, this property has great local transport links including Hampton train station. A popular location for families who are looking to benefit from our outstanding choice of local state and private schools.

Features

- Detached
- Five Bedrooms
- Large Plot
- South Facing Garden
- Scope To Extend (STPP)
- Off-Street Parking



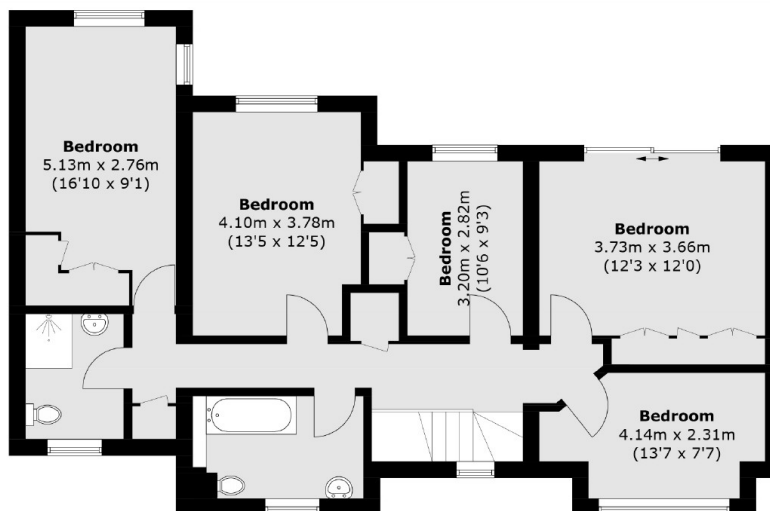
Ormond Crescent, TW12

You are greeted by a spacious entrance hallway that leads to multiple reception rooms, a kitchen, separate dining room and office on the ground floor. We particularly like how the house is spread over just the two floors giving plenty of lateral living space.

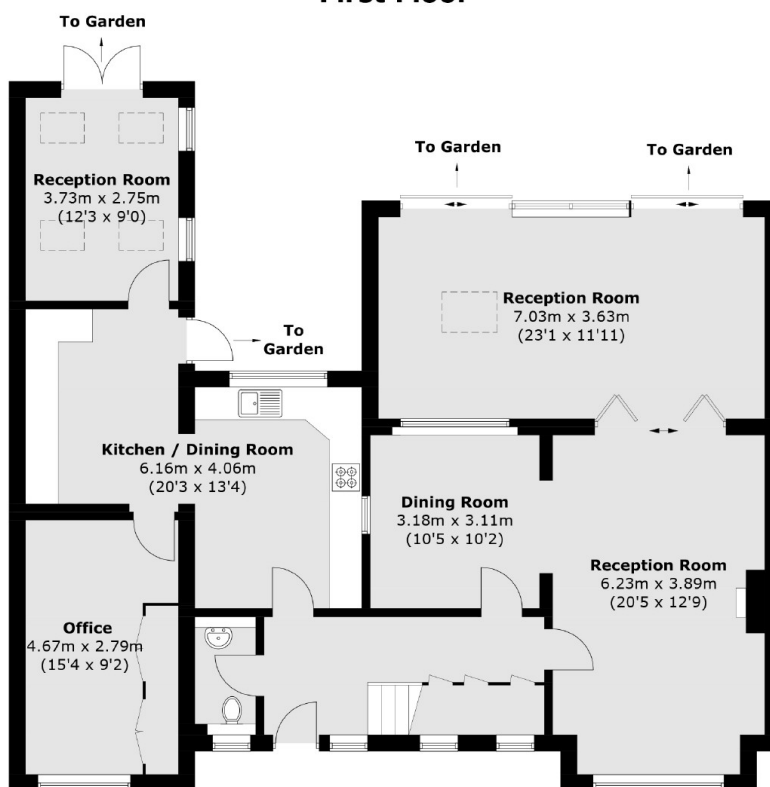
Upstairs we have five bedrooms and two bathrooms, perfect for a growing family's needs. There is massive potential to extend and the large South facing garden makes this house shine. With off-street parking to the front and a generous plot we know that this is a house you will find interesting.



Ormond Crescent, Hampton, TW12



First Floor



Ground Floor

Total area (approx.): 216.3 sq. m (2,328.2 sq. ft)

Dexters

Hampton
93 Station Road
Hampton
TW12 2BD
Sales
020 8255 7777

Energy Rating: TBC. We aim to make our particulars both accurate and reliable. However they are not guaranteed; nor do they form part of an offer or contract. If you require clarification on any points then please contact us, especially if you're traveling some distance to view. Please note that appliances and heating systems have not been tested and therefore no warranties can be given as to their good working order.

RICS | Regulated
Estate Agent
and Letting Agent

dexters.co.uk