



Station Road, TW12

£1,250 Per calendar month

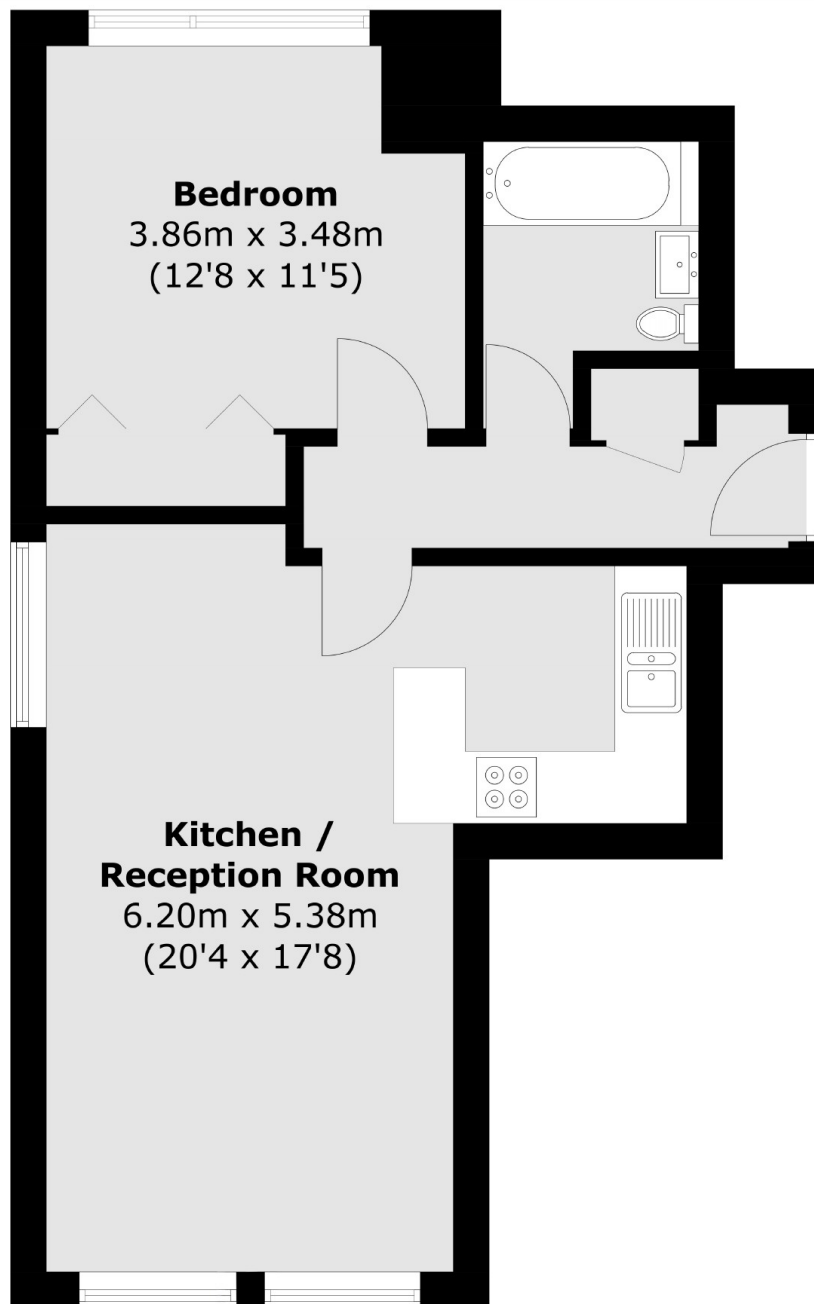
SINGLE PERSON ONLY - This one bedroom ground floor flat has easy access to Hampton station and is the perfect first home! With an open plan kitchen/lounge and great size bedroom, this property won't be available for long.

The property is on Station Road, moments to local convenience shops, cafés and the post office. The River Thames is also within walking distance along with Hampton train station.

Features

- Single occupants only
- Hampton Village Location
- Spacious Lounge
- One Double Bedroom
- Communal Garden
- Street Parking

Station Road,
Hampton, TW12



Ground Floor

Total area (approx.): 47.0 sq. m (505.9 sq. ft)

Dexters

Hampton
93 Station Road
Hampton
TW12 2BD
Lettings
020 8255 8899

Energy Rating: E. We aim to make our particulars both accurate and reliable. However they are not guaranteed; nor do they form part of an offer or contract. If you require clarification on any points then please contact us, especially if you're traveling some distance to view. Please note that appliances and heating systems have not been tested and therefore no warranties can be given as to their good working order.

 **RICS** | Regulated
Estate Agent
and Letting Agent

[dexters.co.uk](https://www.dexters.co.uk)