



Kingswood, SL5

£3,700 Per calendar month

The Crown apartments at Kingswood, developed by award-winning Millgate Homes, offer luxurious living within 22 acres of mature woodland. The building features a bright and spacious vaulted entrance hall with lift access to the upper floors.

Local attractions include Virginia Water Lake, Windsor Castle, Ascot Heath, Thorpe Park, and Legoland. The area is known for its exceptional schools such as Eton College, Wellington, Lambrook, Papplewick, TASIS, and ACS.

Features

Two Double Bedrooms
Modern throughout
Two Bathrooms
Balcony
Two Allocated Parking Spaces
Stunning Development



Kingswood, SL5

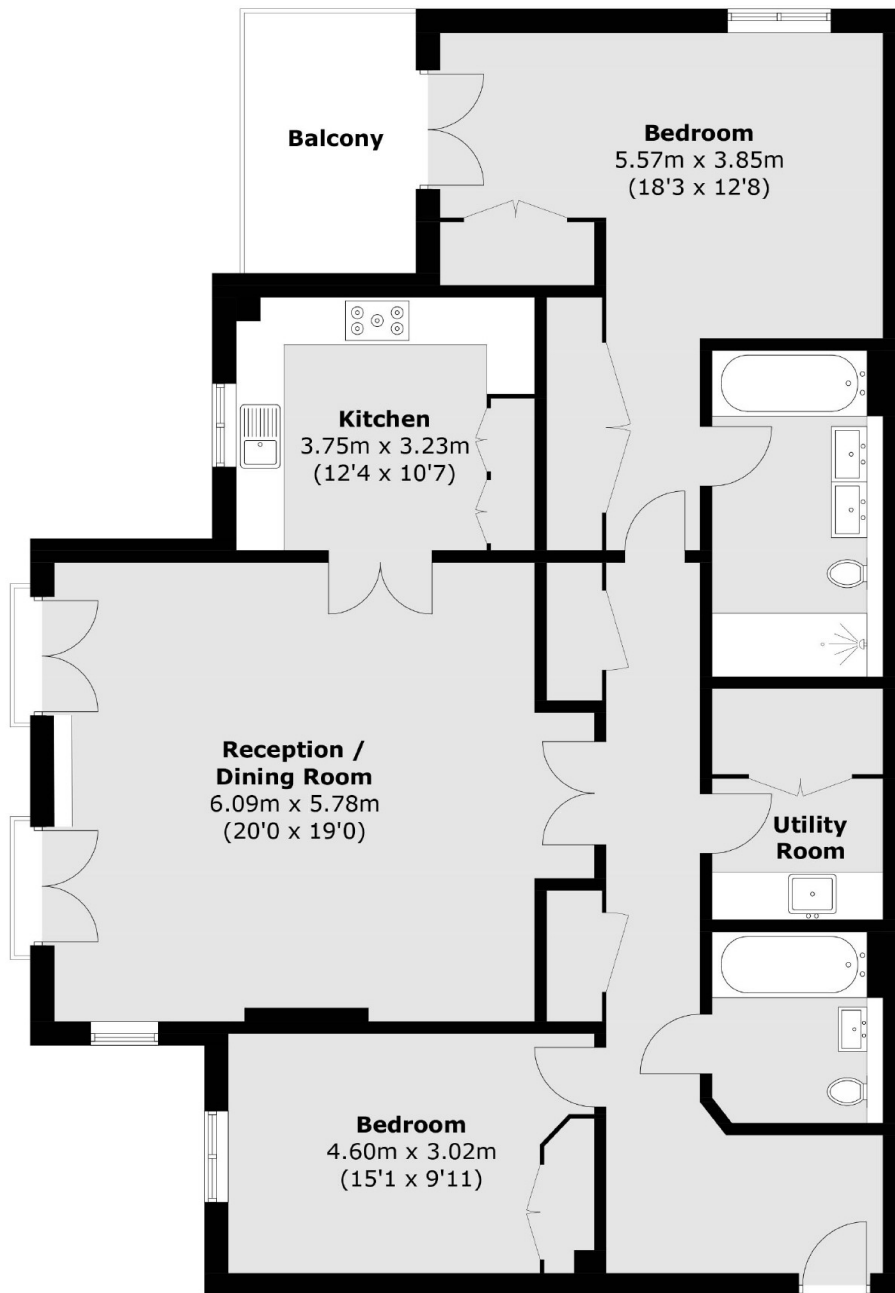
Located on the first floor, it includes a fully integrated kitchen/breakfast room, a separate utility room, a guest bedroom, and a principal bedroom suite with a walk-in dressing area, en suite, and private balcony.

Residents enjoy a landscaped central green, two parking spaces, a secure storage locker, and street-level visitor parking.

Nearby sporting facilities include racing at Ascot and Windsor, polo at Smith's Lawn, Windsor Great Park, and the Royal County of Berkshire Polo Club at Winkfield, and golf at Wentworth, Sunningdale, Maidenhead, Henley, and Marlow.



Kingswood, Ascot, SL5



Total area (approx.): 132.8 sq. m (1,429.4 sq. ft)
Balcony: 7.1 sq. m (76.4 sq. ft)

Dexters

Hampton
93 Station Road
Hampton
TW12 2BD
Lettings
020 8255 8899

Energy Rating: B. We aim to make our particulars both accurate and reliable. However they are not guaranteed; nor do they form part of an offer or contract. If you require clarification on any points then please contact us, especially if you're traveling some distance to view. Please note that appliances and heating systems have not been tested and therefore no warranties can be given as to their good working order.

 **RICS** | Regulated
Estate Agent
and Letting Agent

dexters.co.uk