



**Kingswood, SL5**

**£4,200** Per calendar month

**Dexters**



## Kingswood, SL5

The Crown apartments at Kingswood, developed by award-winning Millgate Homes, offer luxurious living within 22 acres of mature woodland. The building features a bright and spacious vaulted entrance hall with lift access to the upper floors.

Located on the first floor, it includes a fully integrated kitchen/breakfast room, a separate utility room, a guest bedroom, and a principal bedroom suite with a walk-in dressing area, en suite, and private balcony.

Residents enjoy a landscaped central green, two parking spaces, a secure storage locker, and street-level visitor parking.

Nearby sporting facilities include racing at Ascot and Windsor, polo at Smith's Lawn, Windsor Great Park, and the Royal County of Berkshire Polo Club at Winkfield, and golf at Wentworth, Sunningdale, Maidenhead, Henley, and Marlow.

Local attractions include Virginia Water Lake, Windsor Castle, Ascot Heath, Thorpe Park, and Legoland. The area is known for its exceptional schools such as Eton College, Wellington, Lambrook, Papplewick, TASIS, and ACS.

### Features

- Two Double Bedrooms
- Modern throughout
- Two Bathrooms
- Balcony
- Two Allocated Parking Spaces
- Stunning Development

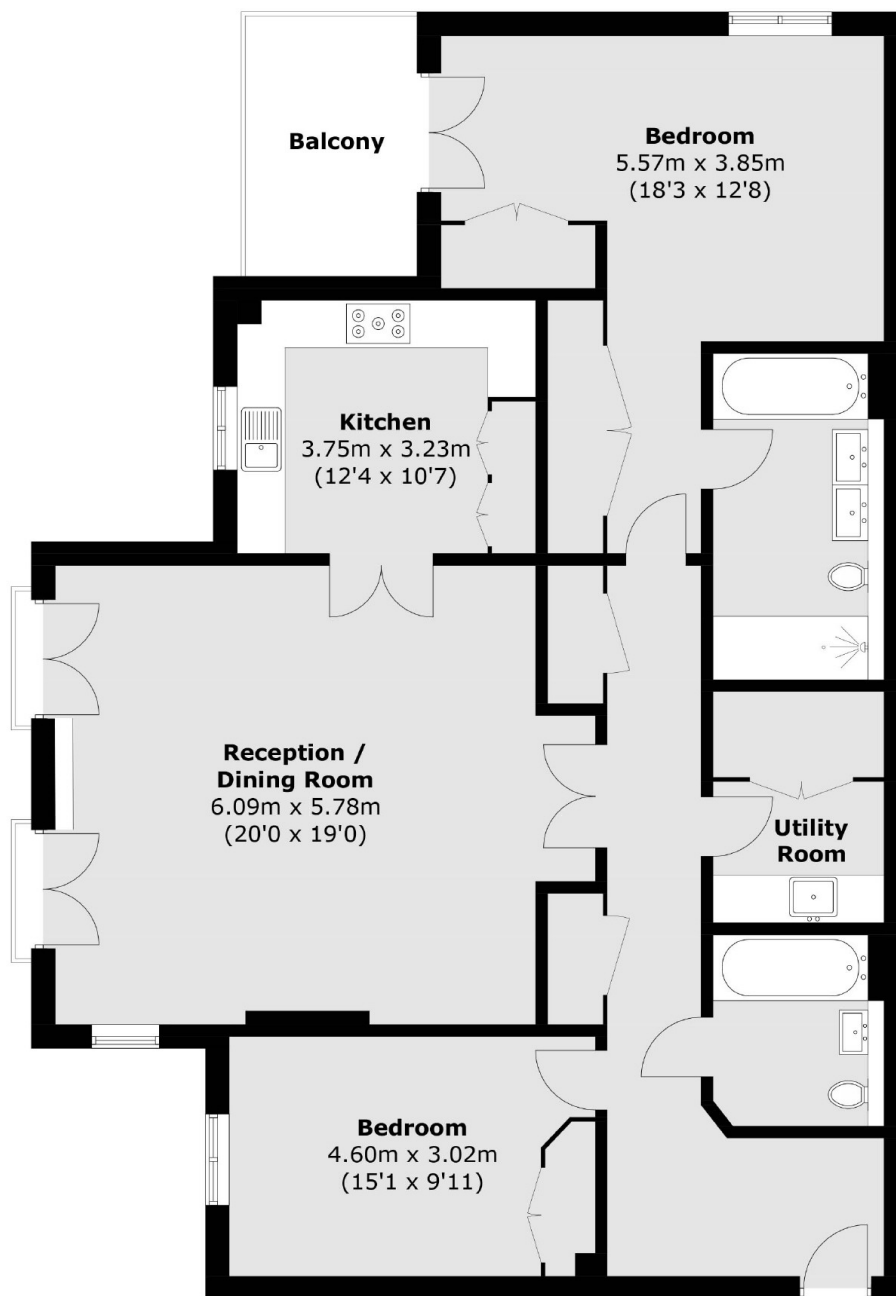








# Kingswood, Ascot, SL5



Total area (approx.): 132.8 sq. m (1,429.4 sq. ft)  
Balcony: 7.1 sq. m (76.4 sq. ft)

## Dexters

Hampton  
93 Station Road  
Hampton  
TW12 2BD  
Lettings  
020 8255 8899

Energy Rating: . We aim to make our particulars both accurate and reliable. However they are not guaranteed; nor do they form part of an offer or contract. If you require clarification on any points then please contact us, especially if you're traveling some distance to view. Please note that appliances and heating systems have not been tested and therefore no warranties can be given as to their good working order.

 **RICS** | Regulated  
Estate Agent  
and Letting Agent

dexters.co.uk