



Chertsey Road, TW17

£1,595 Per calendar month

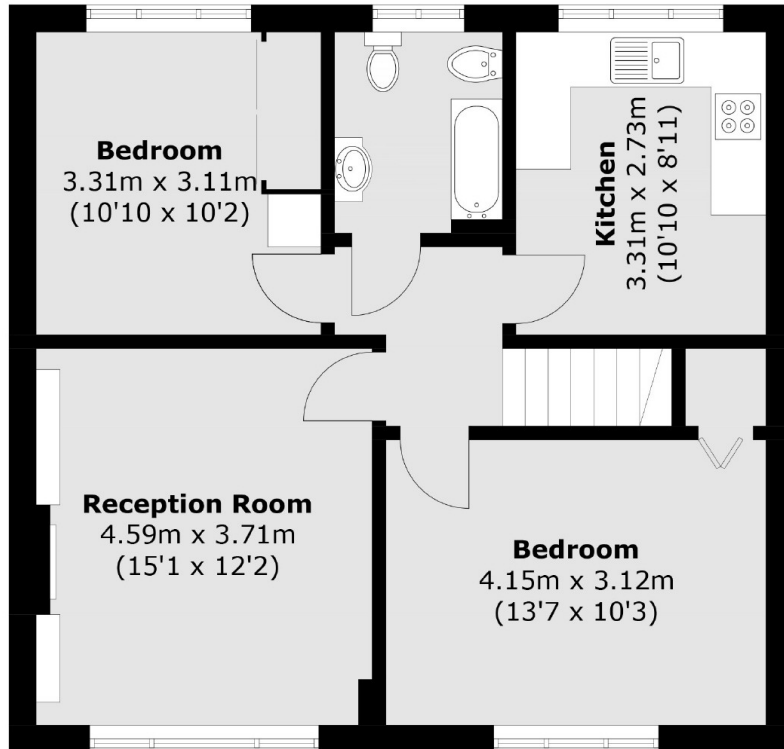
Hidden in the heart of Old Shepperton is this large two bedroom maisonette, with separate lounge, kitchen, two double bedrooms, study room and private rear garden.

The property is located close to the river Thames, Shepperton marina and Shepperton high street with its local shops and direct train line into London Waterloo.

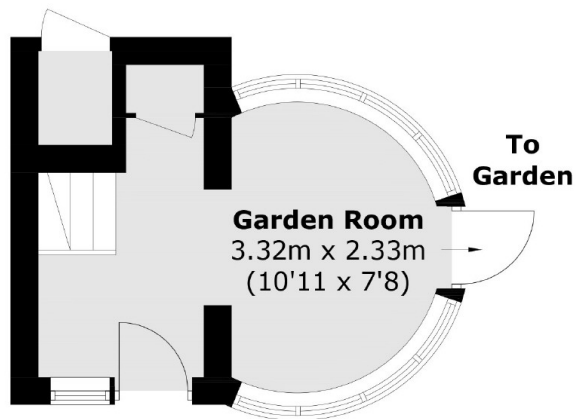
Features

- First Floor Maisonette
- Two Double Bedrooms
- Wooden Flooring Throughout
- Downstairs Study Room
- Private Rear Garden
- Close To Shops

Chertsey Road, Shepperton, TW17



First Floor



Ground Floor

Approx Internal area (approx.): 72.7 sq. m (782.5 sq. ft)
External Cupboard area : 0.8 sq. m (8.6 sq. ft)

Dexters

Hampton
93 Station Road
Hampton
TW12 2BD
Lettings
020 8255 8899

Energy Rating: C. We aim to make our particulars both accurate and reliable. However they are not guaranteed; nor do they form part of an offer or contract. If you require clarification on any points then please contact us, especially if you're traveling some distance to view. Please note that appliances and heating systems have not been tested and therefore no warranties can be given as to their good working order.

 **RICS** | Regulated
Estate Agent
and Letting Agent

dexters.co.uk