



Eastbank Road, TW12

£950,000

This charming Edwardian family home blends period features with modern living, offering spacious rooms, a stylish kitchen, and a beautiful garden. Perfect for families seeking character and convenience in a sought-after location.

Eastbank Road is conveniently located just off Hampton Hill High Street, close to shops, restaurants, and cafés, with Bushy Park and Fulwell Station just a short walk away.

Features

- Edwardian
- Four Bedrooms
- Two Bathrooms
- End Of Terrace
- Period Features
- Private Garden



Eastbank Road, TW12

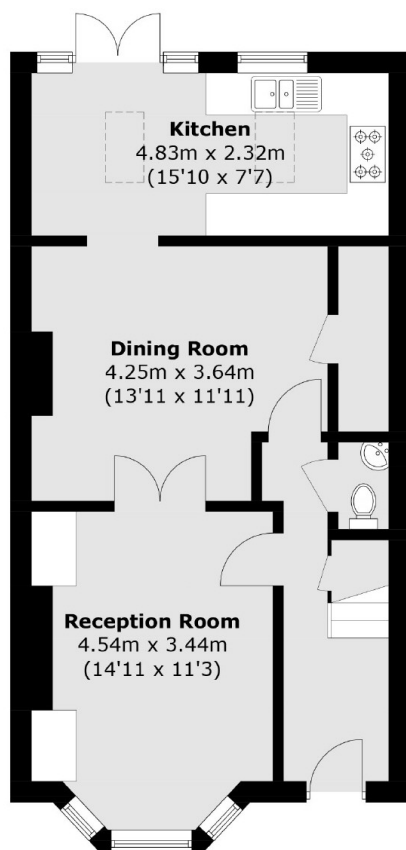
The property opens into a spacious entrance hall, leading to a generously sized front reception room, filled with character and natural light. Beautiful wooden doors separate this space from a second reception room, ideal for a dining area or additional living space.

On the first floor, the home comes with two comfortable double bedrooms, a large single bedroom, and a spacious family bathroom suite. The loft is a real highlight, offering a large master bedroom complete with an en suite shower room.

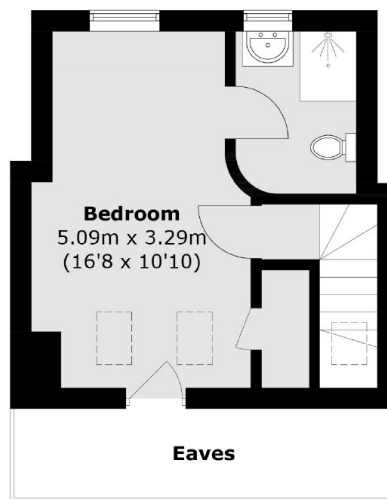
Externally, the property features a delightful garden with both a decked area and a well-maintained lawn, making it the perfect spot for outdoor dining, entertaining, or simply unwinding in a tranquil setting.



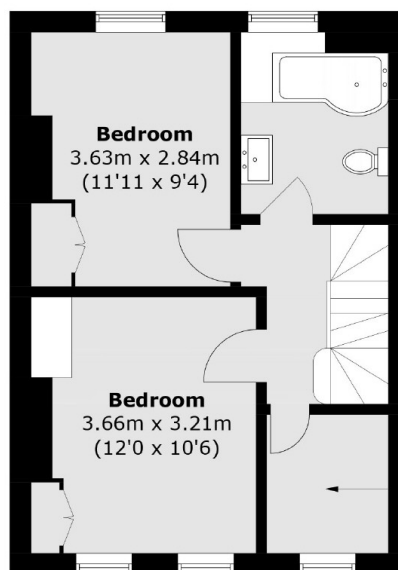
Eastbank Road, Hampton, TW12



Ground Floor



Second Floor



First Floor

Bedroom
1.98m x 1.79m
(6'6 x 5'10)

Total area (approx.): 114.5 sq. m (1,232.4 sq. ft)
(Excluding Eaves)