

St. Georges Road, TW13

£499,950

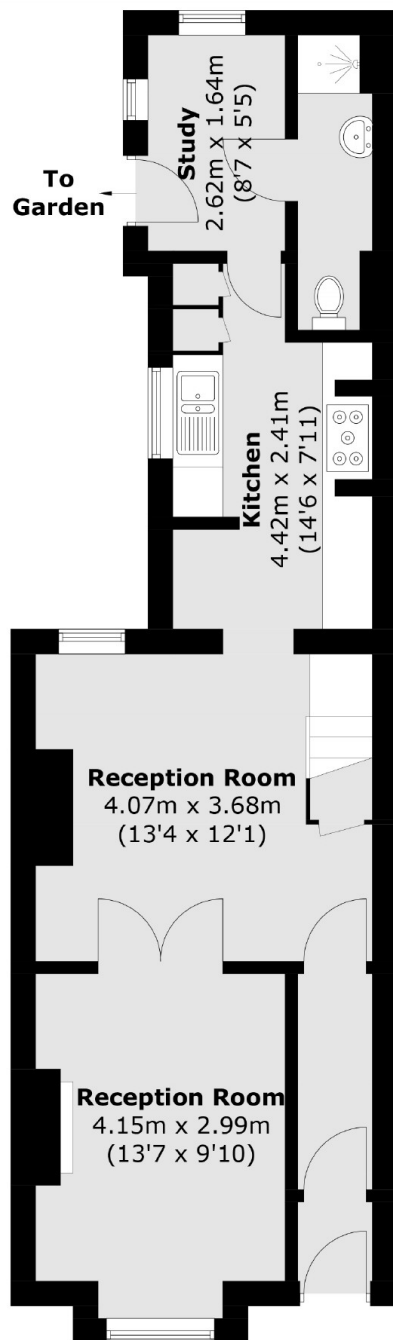
Offered with no onward chain, this beautiful three bedroom semi detached Victorian house would make a wonderful family home. It benefits from having two bathrooms, some original period features as well as potential to extend STPP.

St. Georges Road is a quiet residential street on the borders of Hampton and Hanworth, and has excellent transport links for Heathrow and Feltham town centre with its fast trains to London Waterloo.

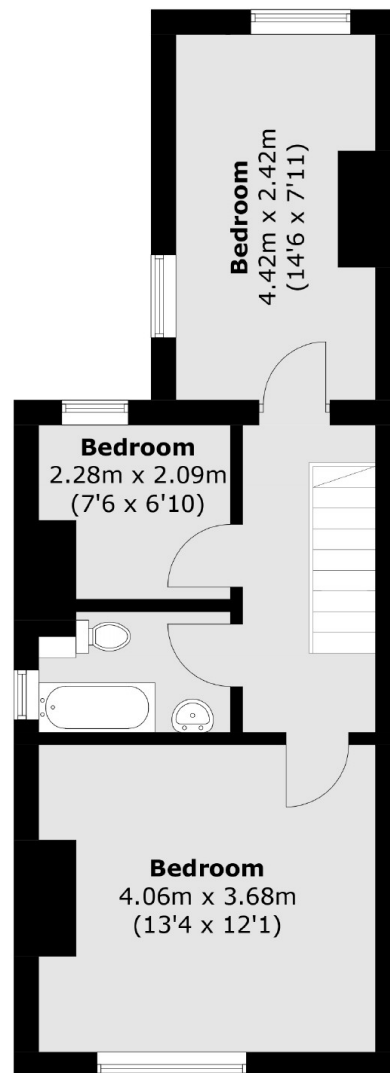
Features

- Three Bedrooms
- Semi Detached
- Potential To Extend STPP
- Victorian
- Excellent Condition
- No Onward Chain

St. Georges Road, Feltham, TW13



Ground Floor



First Floor

Total area (approx.): 91.9 sq. m (989.2 sq. ft)