



## Bridges Avenue, KT8

£3,600 Per calendar month

**Dexters**



## Bridges Avenue, KT8

This beautifully presented four double bedroom house set within an exclusive development and featuring all the wants and needs of a long term family home.

This house features an open plan kitchen diner with bi-folding doors onto a large rear garden. There is a separate reception, utility room, downstairs W.C and garage. Upstairs you have four double bedrooms, three bathrooms and a walk in wardrobe off the master bedroom.

Orchard Farm Avenue is a quiet cul-de-sac in East Molesey close to the boutique shops and cafés of Bridge Road, catchment to outstanding schools, Hampton Court Palace and station providing easy access into London.

### Features

- Four Double Bedrooms
- Three Bathrooms
- Open Plan Kitchen Diner
- Utility Room
- Garage
- Quiet Cul De Sac



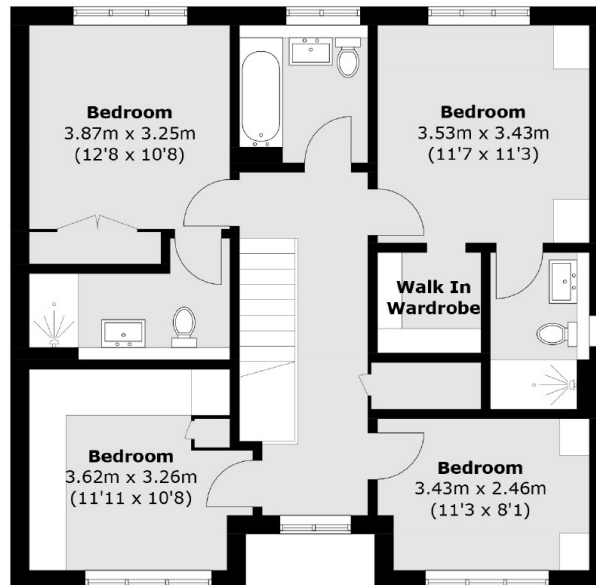




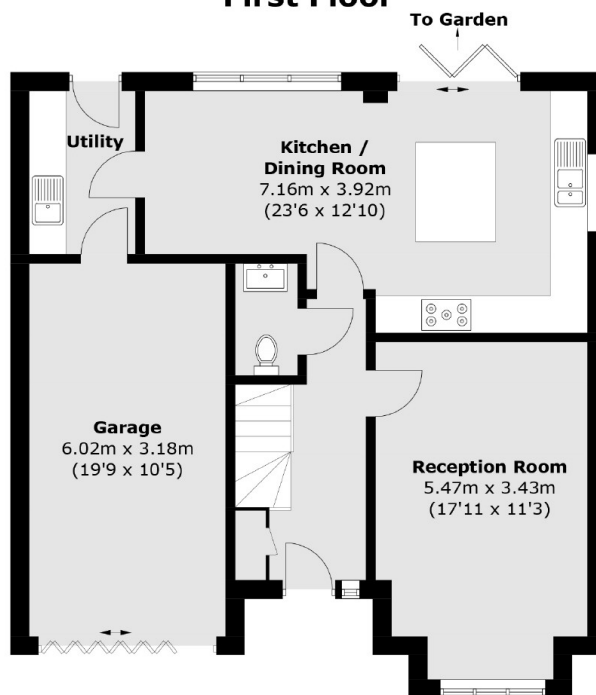




# Bridges Avenue, East Molesey, KT8



**First Floor**



**Ground Floor**

Total area (approx.): 157.4 sq. m (1,694.2 sq. ft)