



Bloxham Crescent, TW12

£2,150 Per calendar month

Tucked away on a quiet residential road in the heart of the village is this well presented two bedroom house, with modern interior and that all important open plan kitchen/dining room.

Bloxham Crescent is within walking distance of Hampton train station, the village shops, Waitrose and a short drive to Kingston town centre along with Bushy Park & River Thames close by.

Features

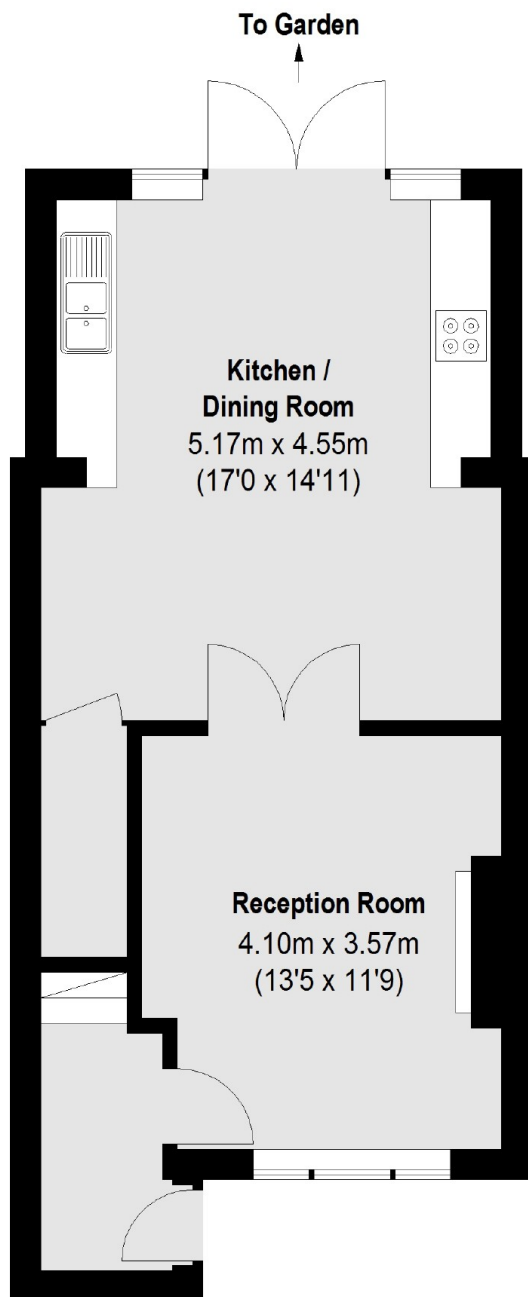
- Reception with open fireplace
- Modern kitchen with pantry
- Area for home office
- Ample Storage throughout
- Secure garden, patio & deck
- Free on-street Parking



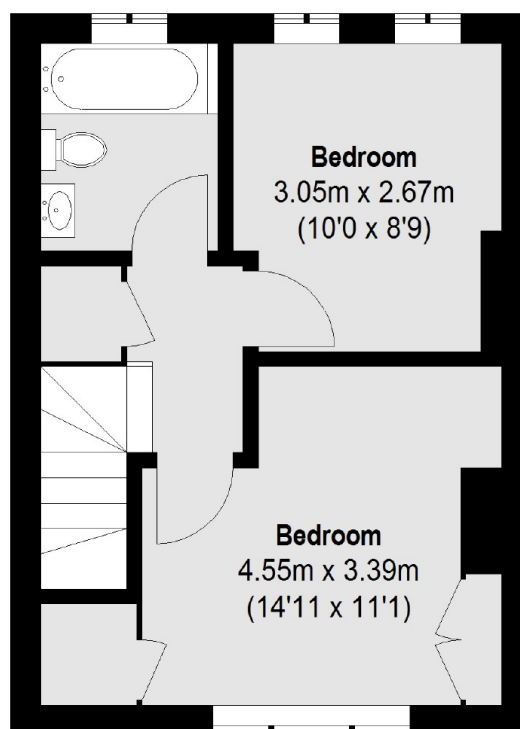
Bloxham Crescent, TW12



Bloxham Crescent, Hampton, TW12



Ground Floor



First Floor

Total area (approx.): 73.95 sq. m (796 sq. ft)