



Grove Crescent, TW13

£550,000

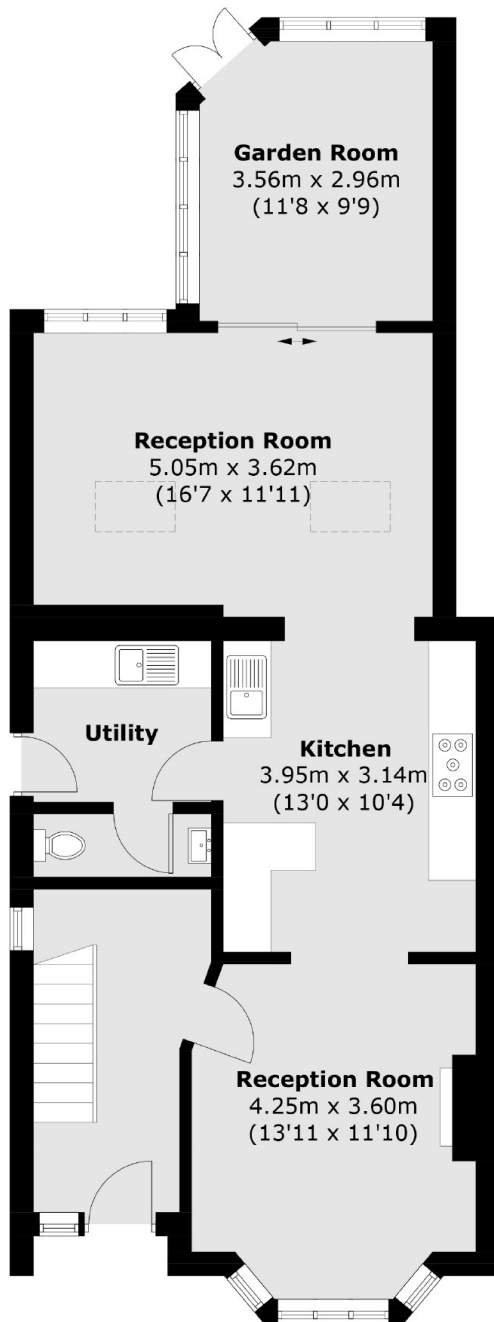
A spacious three-bedroom end-of-terrace home with off-street parking, a rear extension, open-plan living, separate dining and living areas, a ground floor WC, and a conservatory.

Grove Crescent is a popular residential street providing excellent transport links to the M3 and M25, with an array of shops on your doorstep.

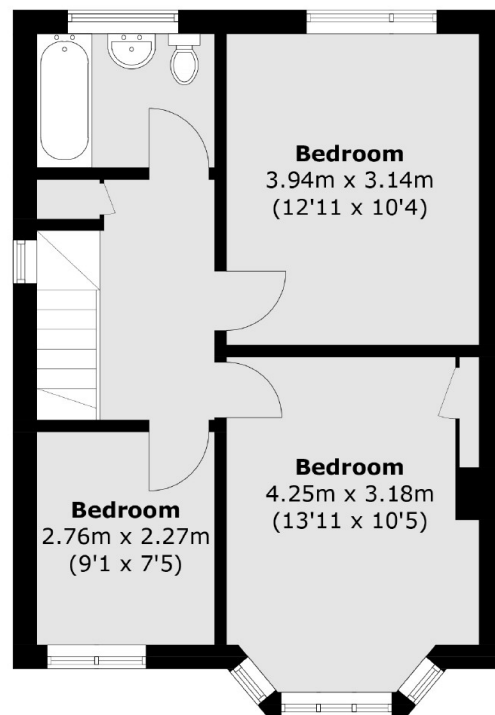
Features

- Three Bedrooms
- End Of Terrace
- Off Street Parking
- Scope To Extend (STPP)
- Large Garden
- Rear Extended

Grove Crescent, Feltham, TW13



Ground Floor



First Floor

Total area (approx.): 118.8 sq. m (1278.8 sq. ft)

Dexters

Hampton
93 Station Road
Hampton
TW12 2BD
Sales
020 8255 7777

Energy Rating: D. We aim to make our particulars both accurate and reliable. However they are not guaranteed; nor do they form part of an offer or contract. If you require clarification on any points then please contact us, especially if you're traveling some distance to view. Please note that appliances and heating systems have not been tested and therefore no warranties can be given as to their good working order.

 **RICS** | Regulated
Estate Agent
and Letting Agent

[dexters.co.uk](https://www.dexters.co.uk)