



## Hampton Road, TW12

### £350,000

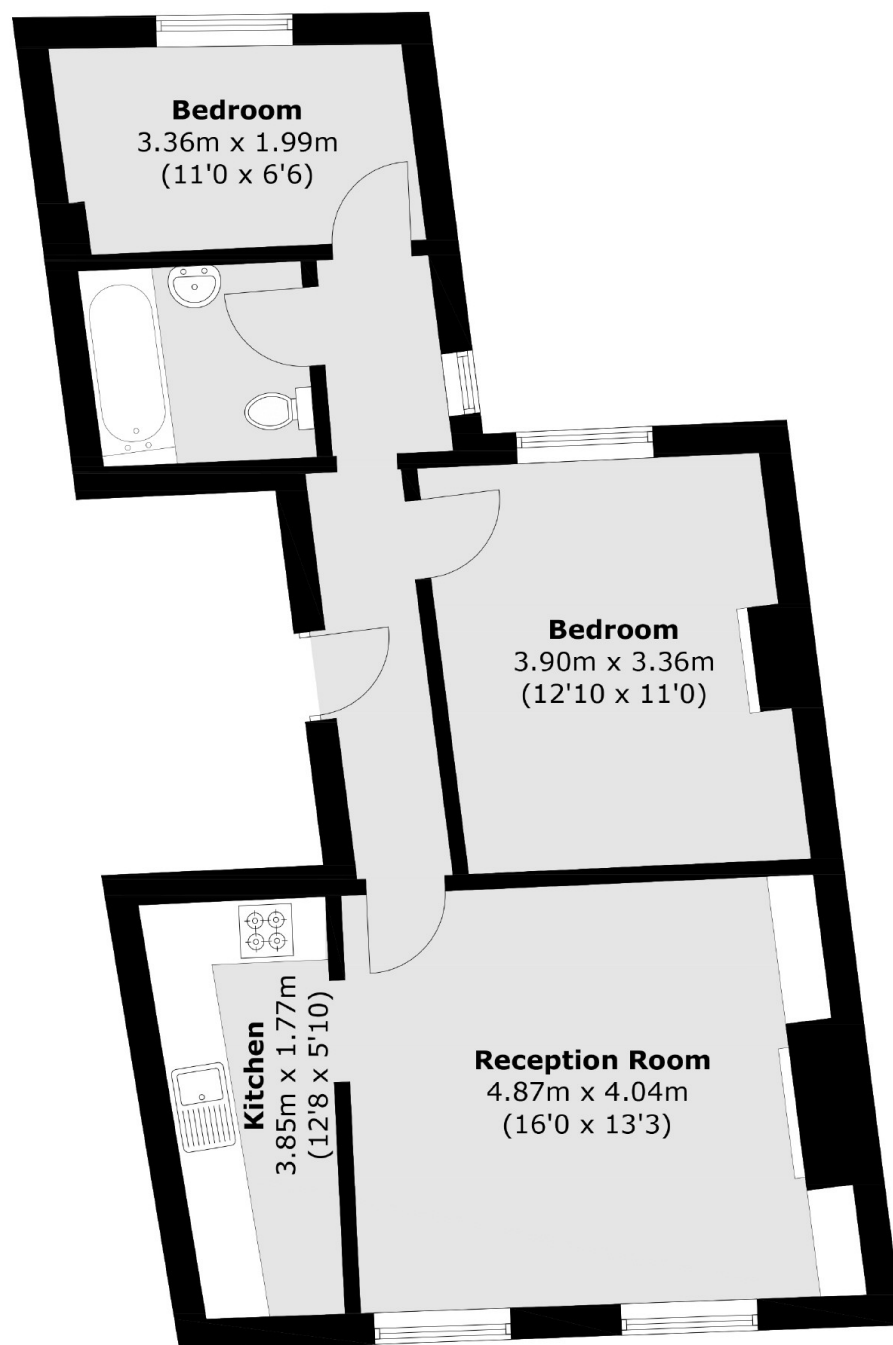
This fantastic two bedroom, first floor Victorian conversion is in great condition and positioned perfectly for easy access to both Hampton Hill and Teddington. There is off-street parking around the back of the building.

Hampton Road is centrally located for Fulwell Station and many local shops and cafés. There is easy access to both Teddington, Twickenham and the A316, whilst Bushy Park is a stroll away.

### Features

- Two Bedrooms
- First Floor
- Period Conversion
- Parking
- Close To Amenities
- Teddington Borders

# Hampton Road, Hampton Hill, TW12



Total area (approx.): 56.4 sq. m (607.1 sq. ft)

## Dexters

Hampton  
93 Station Road  
Hampton  
TW12 2BD  
Sales  
020 8255 7777

Energy Rating: C. We aim to make our particulars both accurate and reliable. However they are not guaranteed; nor do they form part of an offer or contract. If you require clarification on any points then please contact us, especially if you're traveling some distance to view. Please note that appliances and heating systems have not been tested and therefore no warranties can be given as to their good working order.

 **RICS** | Regulated  
Estate Agent  
and Letting Agent

[dexters.co.uk](https://www.dexters.co.uk)