



Arnison Road, KT8

£1,495,000

This is the ideal family home! Having been in the current family for around 50 years, we have a detached 1920s four bedroom house with scope to extend (subject to planning permission) and a large garden.

Arnison Road is a premier road in East Molesey, convenient to enjoy all the benefits of the area such as, cafés, restaurants and shops located in Bridge Road, the River Thames, Hampton Court Station, the Palace and Bushy Park.

Features

- Four Bedrooms
- Detached
- Scope To Extend (STPP)
- No Onward Chain
- Large Garden Circa 100ft
- Off Street Parking



Arnison Road, KT8

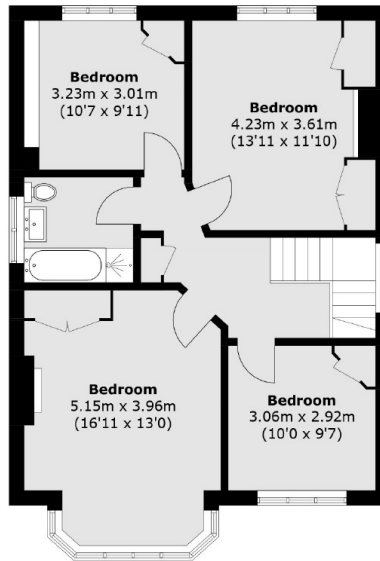
With a pretty, traditional 1920s frontage, you enter into a good sized hallway leading onto a living room, kitchen and dining room on the ground floor. We love the character and homely feeling you get as you walk around.

Upstairs we have four bedrooms and a family bathroom. With the house spread over two floors currently, there is room to grow and extend the house to suit your needs.

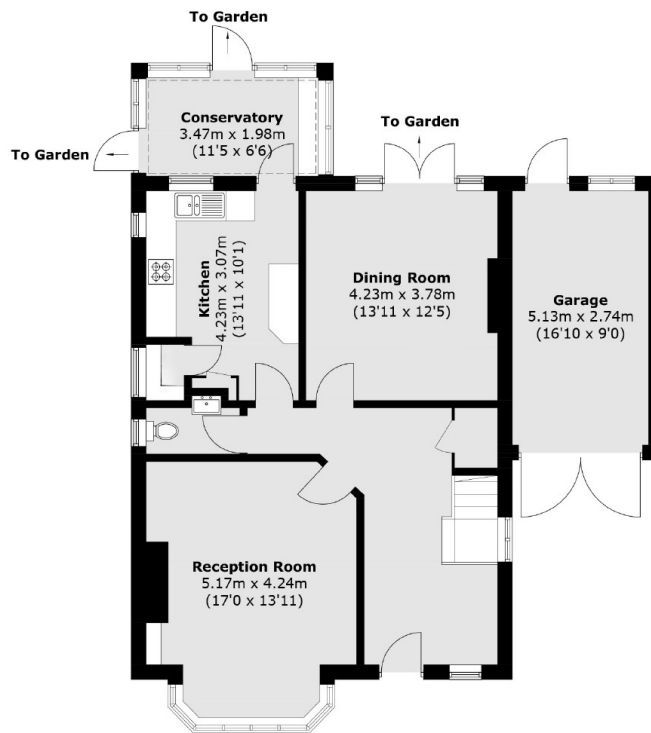
To the rear is a large garden, circa 100ft, and the house also comes with a garage and off street parking to the front.



Arnison Road, East Molesey, KT8



First Floor



Ground Floor

Total area (approx.): 163.9 sq. m (1,764.1 sq. ft)
Garage: 14.6 sq. m (157.1 sq. ft)