



Lower Hampton Road, TW16

£4,250 Per calendar month

Dexters



Lower Hampton Road, TW16

One of a pair of recently built four double bedroom detached family homes finished to a high specification. The house boasts excellent entertaining space with a practical layout throughout ideal for a growing family.

The property is within walking distance of the historic village of Lower Sunbury bordered to the south by the River Thames with its many green spaces and fine selection of pubs and restaurants.

Features

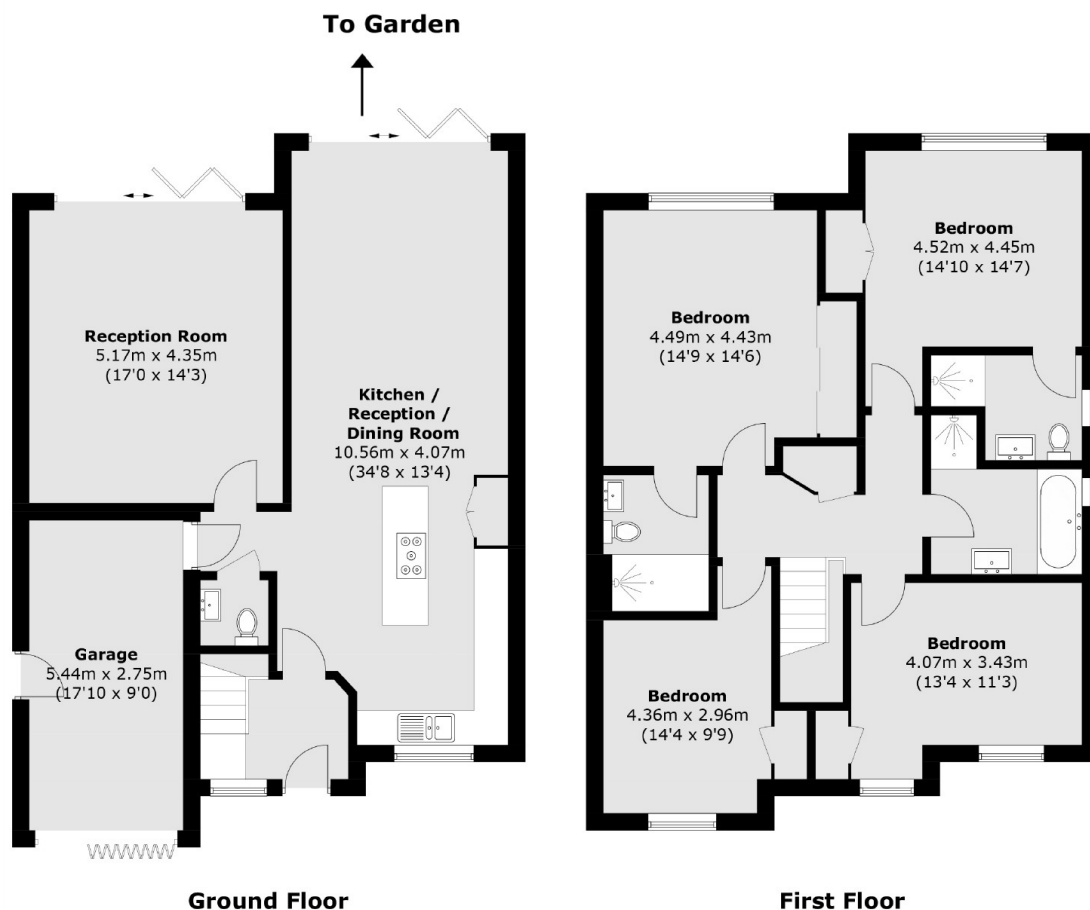
- Four Double Bedrooms
- Kitchen With Quartz Worktops
- South Facing Gardens
- Oak Style Flooring Downstairs
- Built In Wardrobes In Bedrooms
- Garage







Lower Hampton Road, Sunbury-On-Thames, TW16



Total area (approx.): 177.9 sq. m (1,914.9 sq. ft)