



Avenue Road, TW12

£2,195 Per calendar month

A spacious three bedroom split-level apartment a quarter of a mile from the mainline station and a short stroll from the village shops. The property has large reception room, modern bathroom with separate shower cubicle and private garden.

At the end of one on the most desirable roads in Hampton, sits Dyer House with its large rooms and fantastic green spaces.

Features

- Three Bedrooms
- Split Level
- Private Garden
- Close to Station
- Outstanding Schools
- Central Location

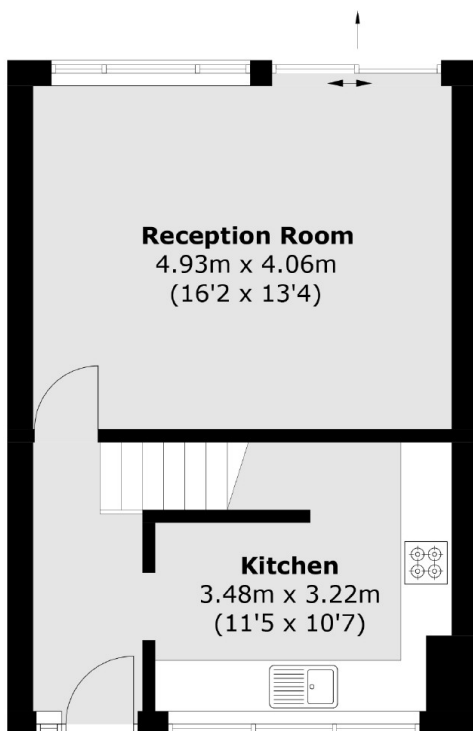
Avenue Road, Hampton, TW12



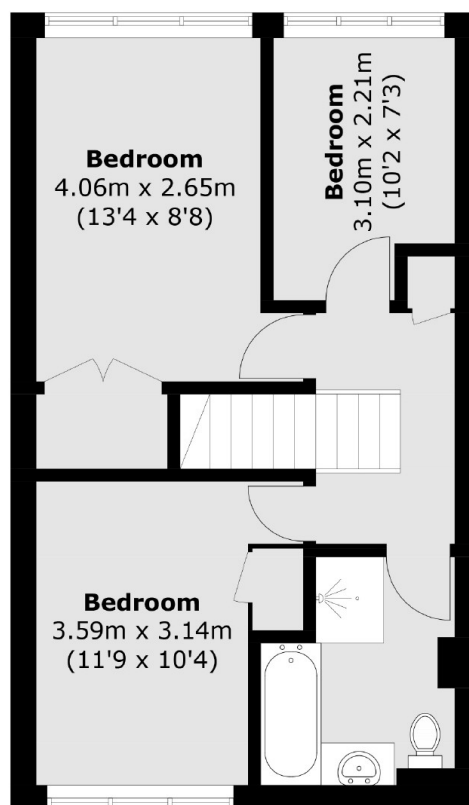
Outbuilding

(Not Shown In Actual
Location / Orientation)

To Garden



Ground Floor



First Floor

Total area (approx.): 80.5 sq. m (866.5 sq. ft)
Outbuilding: 1.9 sq. m (20.5 sq. ft)