



Riverside, TW16

£4,495 Per calendar month

Dexters



Riverside, TW16

This beautiful, south-facing three bedroom home boasts stylish interiors which are modern and tasteful in design with high-end finishes and appliances.

Accommodation is made up of a spacious open plan living area with floor to ceiling windows and Juliette balconies offering stunning views of the river. The living area opens onto a stylish, modern integrated kitchen with breakfast bar and family dining area, also overlooking the river. There is also a W.C off the hallway.

To the ground floor there is further reception room has bi-fold doors to a covered riverside terrace and outside dining area. There are two bedrooms and a family bathroom on this level, as well as a utility room and store room. On the riverside, the terrace leads onto a pretty lawned garden with steps to the private 28ft mooring.

The top floor accommodates an impressive master suite with dressing room, en-suite and a private terrace with panoramic river views.

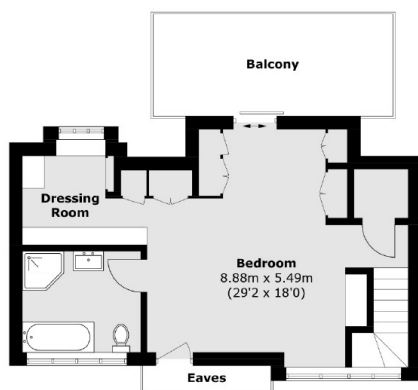
Four Hampton Road runs parallel to The Thames in the village of Lower Sunbury-upon-Thames.

Features

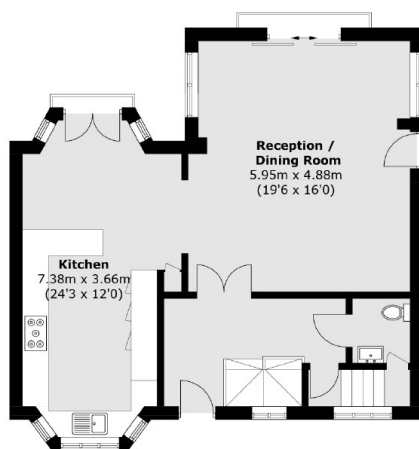
- Beautiful House
- Stylish Interiors
- River Views
- Private Mooring
- South Facing
- Three Bedrooms



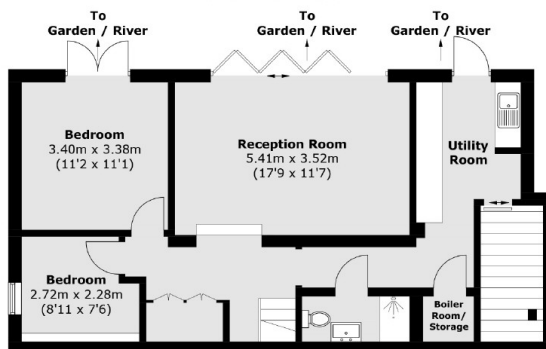
Riverside, Sunbury-On-Thames, TW16



First Floor



Ground Floor



Lower Ground Floor

Total area (approx.): 182.3 sq. m (1,962.1 sq. ft)
(Excluding Eaves)

Balcony: 12.9 sq. m (138.8 sq. ft)