



Feltham Avenue, KT8

£489,000

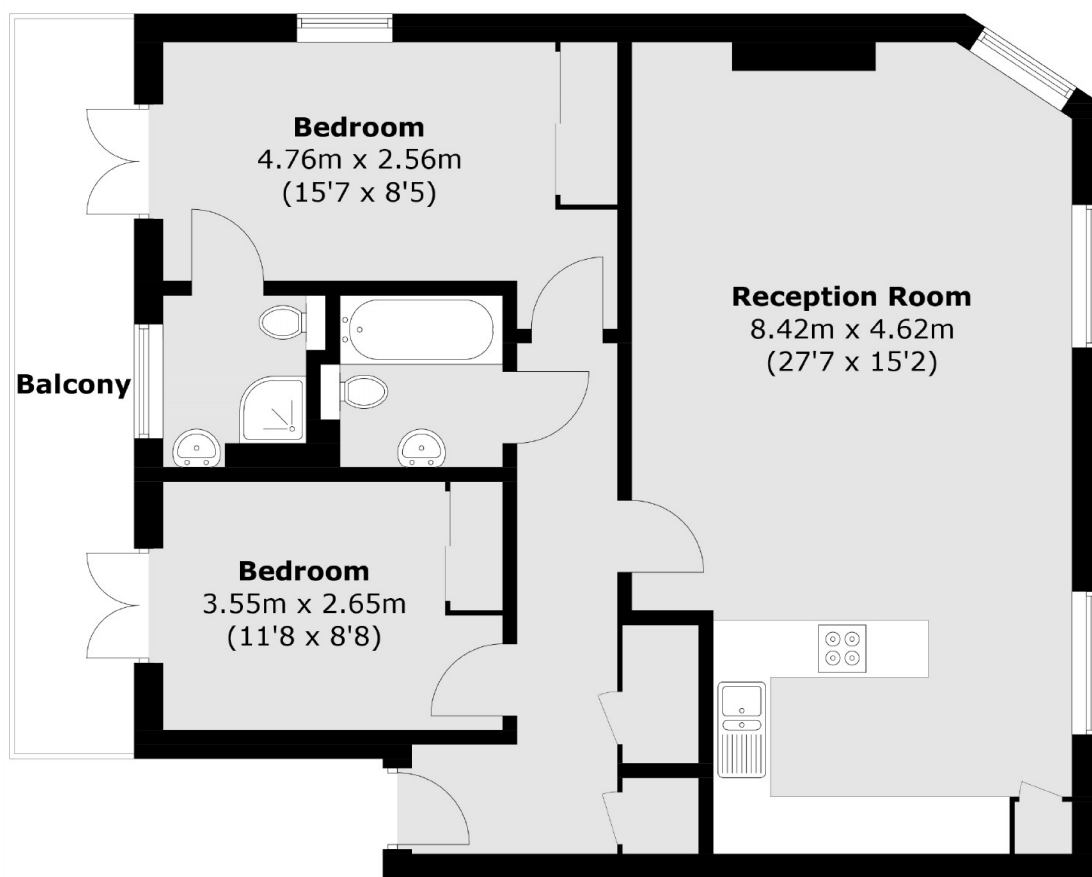
A stylish two bedroom, two bathroom apartment with underground off-street parking. The flat is accessed via a courtyard garden and comes with a private balcony.

Hampton Court Mews is nestled between the restaurants, bars, antique shops and boutiques that surround Hampton Court Palace, the property is just 200ft from the River Thames and the station is down the road.

Features

- Two Bedrooms
- Two Bathrooms
- Communal Courtyard Garden
- Underground Parking
- Balcony
- Long Lease

Feltham Avenue, East Molesey, KT8



Total area (approx.): 77.4 sq. m (833.1 sq. ft)
Balcony area (approx.): 9.6 sq. m (103.3 sq. ft)