



New Road, TW13

£549,950

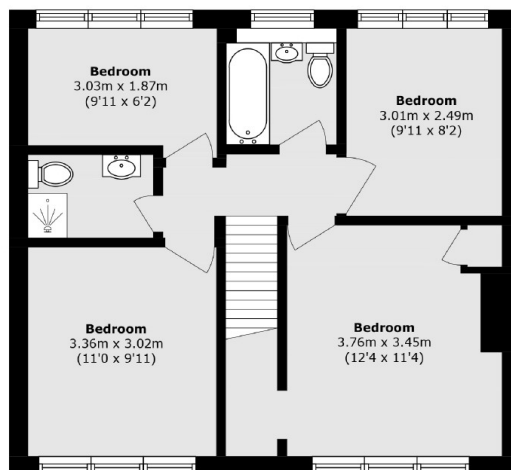
A largely extended semi-detached family home complete with a beautiful south west facing garden, off-street parking and has further room to extend (STPP). A perfect home for a growing family.

New Road is a quiet no through road in Hanworth. Local bus routes to Heathrow are at the bottom road and Tesco's is just around the corner.

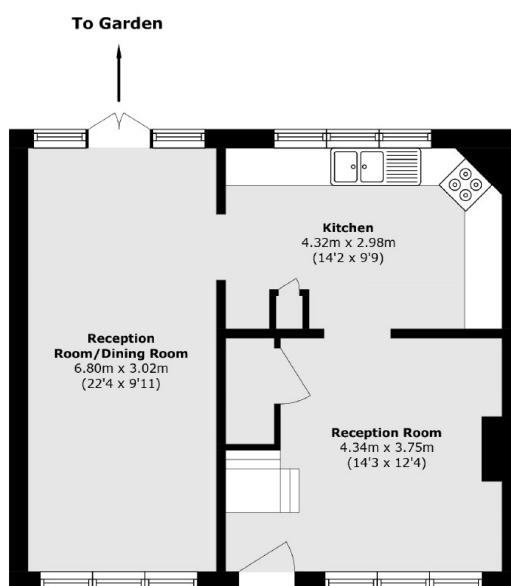
Features

- Semi-Detached
- Four Bedrooms
- Off-Street Parking
- South West Facing Garden
- Scope To Extend (STPP)
- No Through Road

New Road, Feltham, TW13



First Floor



Ground Floor

Total area (approx.): 103.8 sq. m (1117.3 sq. ft)