



## Spring Grove, TW12

£675,000

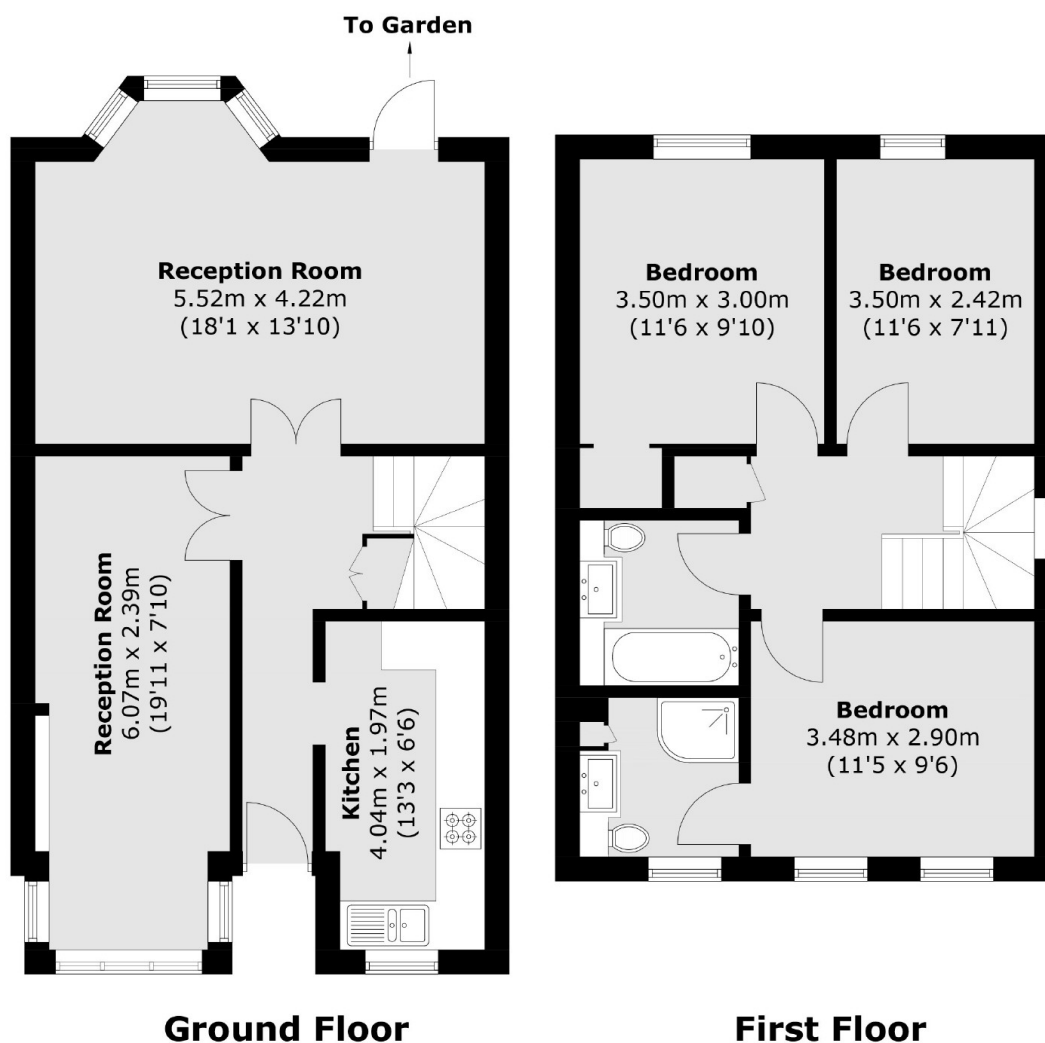
This is a really homely, three bedroom house with two reception rooms and scope to further extend (subject to planning permission). On the widest plot on the road, we love this house and are keen to arrange for you to take a look.

Located in the heart of Hampton Village, Spring Grove is a quiet cul-de-sac, moments to the shops and cafés, excellent local schools, and Hampton train station with its direct links to London Waterloo.

### Features

- Three Bedrooms
- Two Bathrooms
- End Of Terrace
- Private Road
- Off Street Parking
- Private Garden

# Spring Grove, Hampton, TW12



Total area (approx.): 100.7 sq. m (1,083.9 sq. ft)