



Grove Crescent, TW13

£475,000

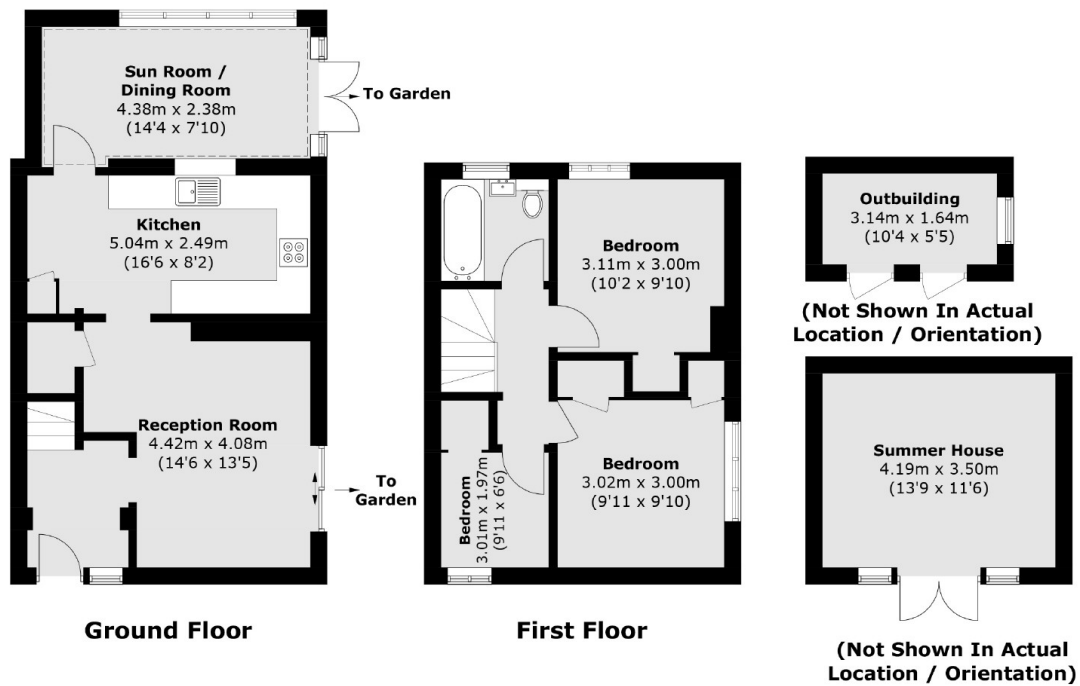
This is such a great buy! A three bedroom house with a huge wrap around garden and plenty of room to extend (subject to planning permission). It makes the ideal family home and we are keen for you to view.

Grove Crescent is a popular residential street providing excellent transport links to the M3 and M25, with an array of shops on your doorstep and close to Hampton Common and Bear Road Park.

Features

- Three Bedrooms
- End Of Terrace
- Large Garden
- Summerhouse
- Scope To Extend (STPP)
- Recently Refurbished

Grove Crescent, Hanworth, TW13



Total area (approx.): 85.0 sq. m (914.9 sq. ft)
Summer House / Outbuilding: 20.3 sq. m (218.5 sq. ft)