



Gloxinia Walk, TW12

£450,000

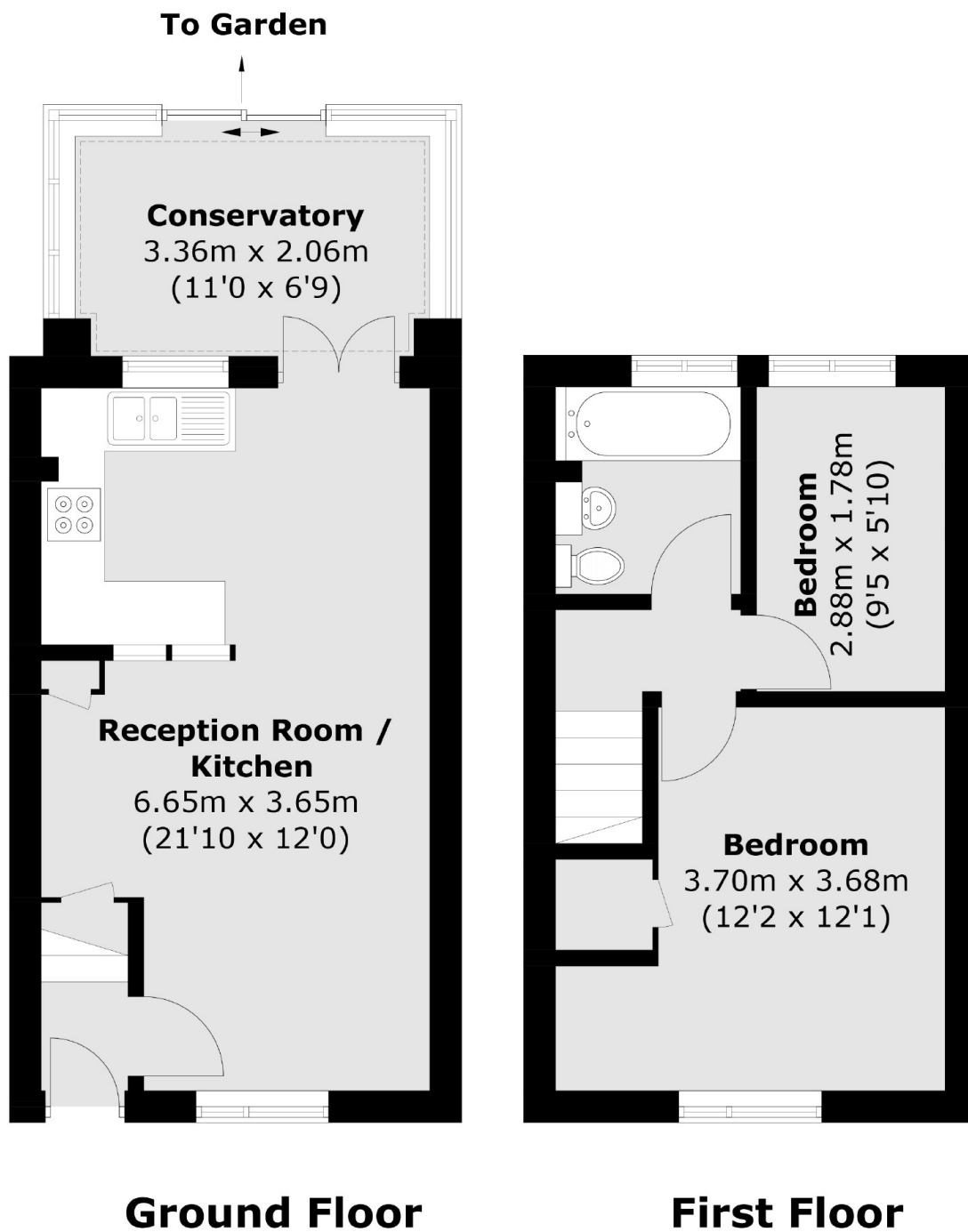
Coming with the benefit of no onward chain and tons of scope to extend and grow the house to the loft, rear and side (subject to planning permission) this is a two bedroom end of terraced house that makes a brilliant buy.

Gloxinia Walk is located in the desirable Countryside Development in Hampton. A popular location due to it's convenience to bus routes and local shops.

Features

- Two Bedrooms
- End Of Terrace
- Wide Garden
- Scope To Extend (STPP)
- Off Street Parking
- No Onward Chain

Gloxinia Walk, Hampton, TW12



Total area (approx.): 57.2 sq. m (615.6 sq. ft)