



Avenue Road, TW12

£685,000

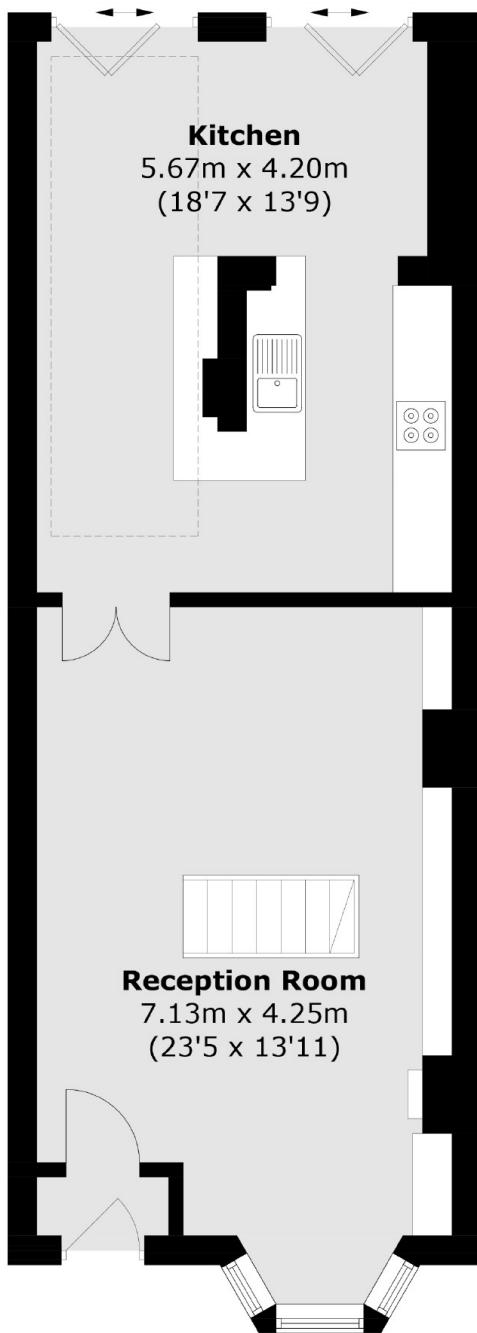
This is a two bedroom Victorian home which has been recently refurbished throughout. We love how light the house is and due to the size, location and garden we are confident you will love it too.

Avenue Road is a very popular road within the Hampton village and is great if you require a short walk to the station and love having both shops and restaurants on your doorstep. Excellent schools, Bushy Park and the River Thames are also close by.

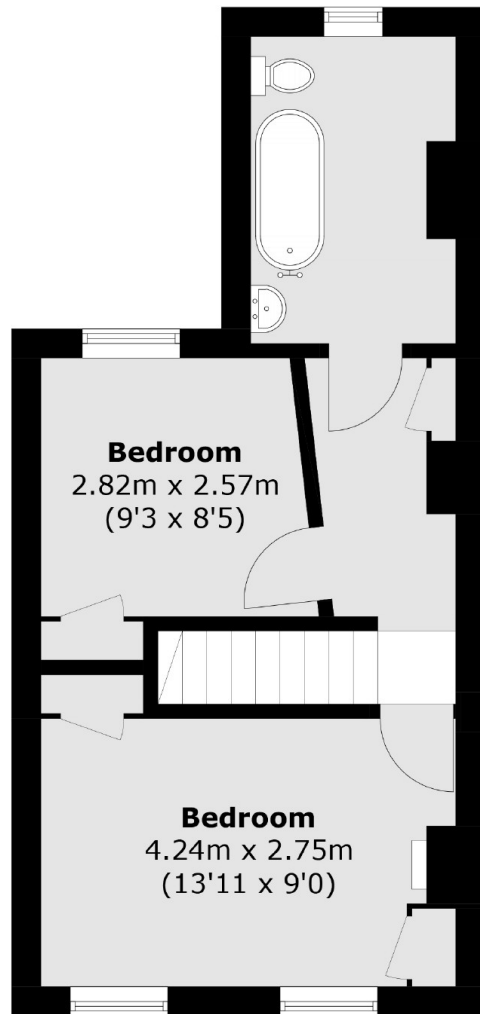
Features

- Two Bedrooms
- Victorian
- Scope To Extend
- Private Garden
- Village Location
- Excellent Condition

Avenue Road, Hampton, TW12



Ground Floor



First Floor

Total area (approx.): 87.8 sq. m (945.1 sq. ft)