



## Riverdale Road, TW13

### £625,000

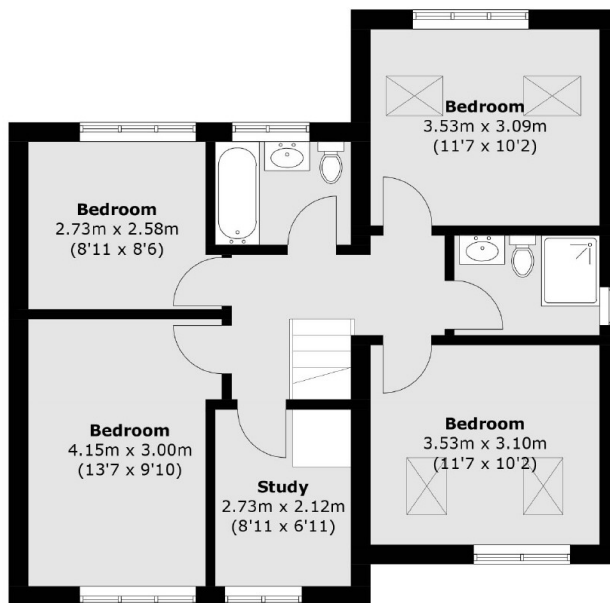
We are excited to launch this gorgeous semi-detached family home with four large bedrooms and study. This house was extended and modernised in recent years, creating a generous living space. Call now to arrange a viewing!

Riverdale Road is a quiet residential road within walking distance of excellent transport links and local schools. Hampton Common, the Longford River and a variety of shops are also close by.

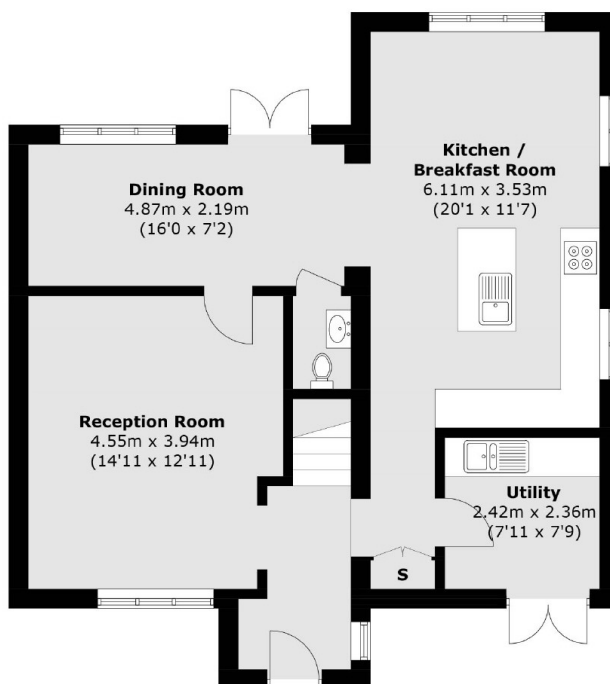
### Features

- Semi-Detached
- Four bedrooms
- Multiple Study Areas
- Private Garden
- Off-Street Parking
- Electrical Car Charging

# Riverdale Road, Feltham, TW13



**First Floor**



**Ground Floor**

Total area (approx.): 134.8 sq. m (1,450.9 sq. ft)

## Dexters

Hampton  
93 Station Road  
Hampton  
TW12 2BD  
Sales  
020 8255 7777

Energy Rating: C. We aim to make our particulars both accurate and reliable. However they are not guaranteed; nor do they form part of an offer or contract. If you require clarification on any points then please contact us, especially if you're traveling some distance to view. Please note that appliances and heating systems have not been tested and therefore no warranties can be given as to their good working order.

 **RICS** | Regulated  
Estate Agent  
and Letting Agent

[dexters.co.uk](https://www.dexters.co.uk)