



Palace Road, KT8

£2,150,000

Dexters



Palace Road, KT8

The Red House is a landmark, double-fronted Victorian home. Coming with a flexible layout, including a self contained two bedroom annex, it's a house that really needs to be seen to be fully appreciated. If you are on the lookout for a forever home then you may have just found it.

Spanning over 4,000 sq ft across four floors, this home boasts spacious interiors, high ceilings, large windows, intricate ceiling details, and charming feature fireplaces.

It is made up of six well-proportioned bedrooms, with the principal suite benefiting from a dedicated dressing room, two additional bathrooms, and three reception rooms. The property also offers a fully self-contained, two-bedroom annex on the lower ground floor.

The house features a deep front driveway for off-street parking and a generous rear garden, mainly laid to lawn, with access from both the lower ground and ground floors.

Palace Road is one of the most prestigious roads in East Molesey, moments from the hustle and bustle of Bridge Road and close to Hampton Court Palace and the banks of the River Thames.

Features

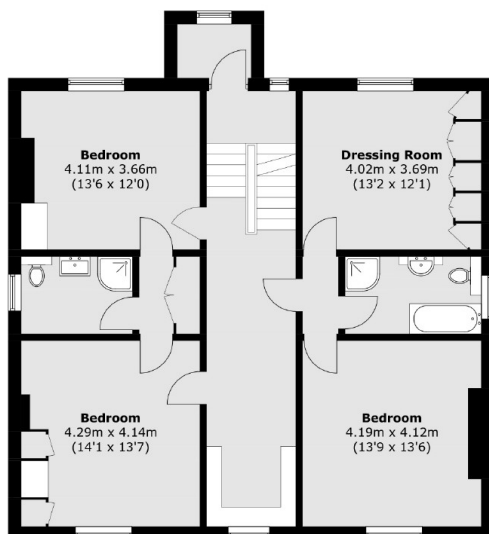
- Victorian
- Eight Bedrooms
- Four Bathrooms
- Off Street Parking
- Over 4000 Sq Ft
- Large Garden



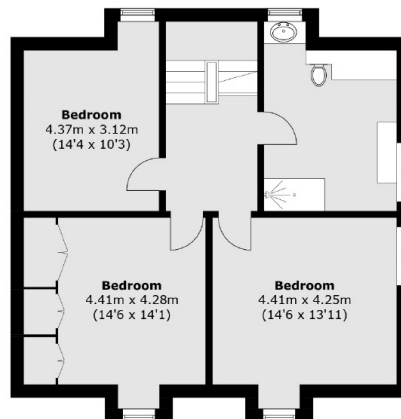




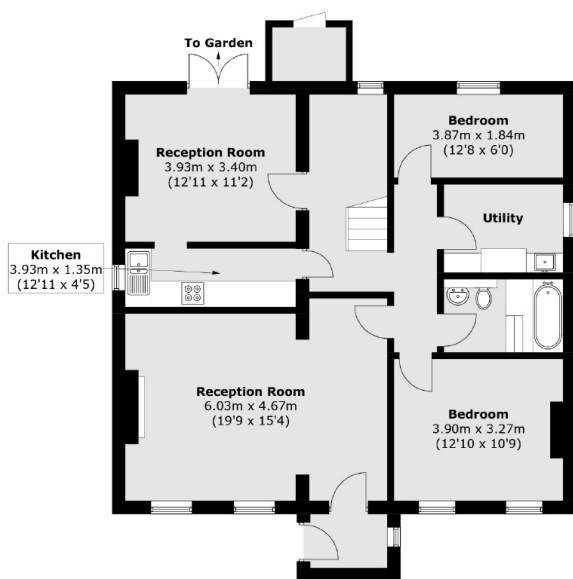
Palace Road, East Molesey, KT8



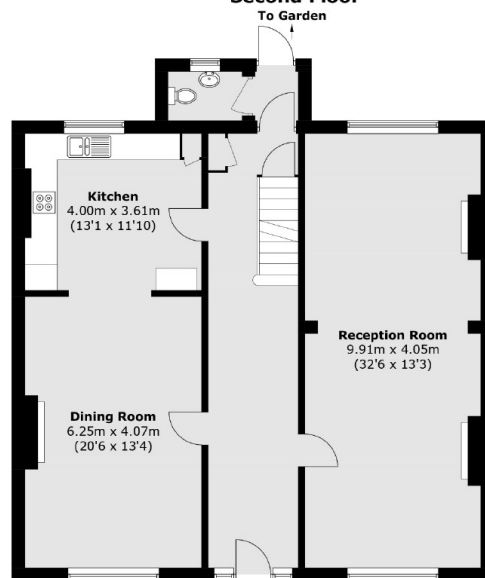
First Floor



Second Floor



Lower Ground Floor



Upper Ground Floor

Total area (approx.): 386.3 sq. m (4,158.0 sq. ft)
External Cupboard: 2.1 sq. m (22.6 sq. ft)

Dexters

Hampton
93 Station Road
Hampton
TW12 2BD
Sales
020 8255 7777

Energy Rating: D. We aim to make our particulars both accurate and reliable. However they are not guaranteed; nor do they form part of an offer or contract. If you require clarification on any points then please contact us, especially if you're traveling some distance to view. Please note that appliances and heating systems have not been tested and therefore no warranties can be given as to their good working order.

RICS | Regulated
Estate Agent
and Letting Agent

dexters.co.uk