



Grove Crescent, TW13

£399,950

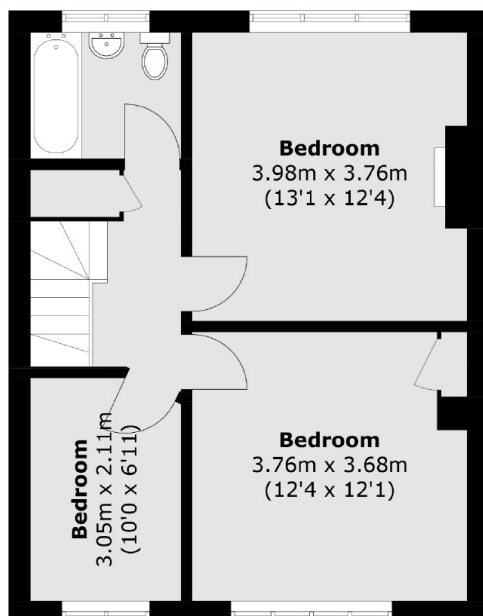
A three bedroom house which is in need of modernisation throughout and comes with the benefit of no onward chain. It will make a lovely family home for the next owner and we are keen to arrange for you to view.

Grove Crescent is a popular residential street providing excellent transport links to the M3 and M25, with an array of shops on your doorstep.

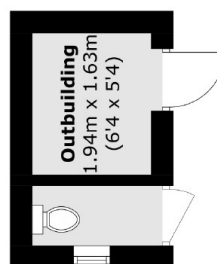
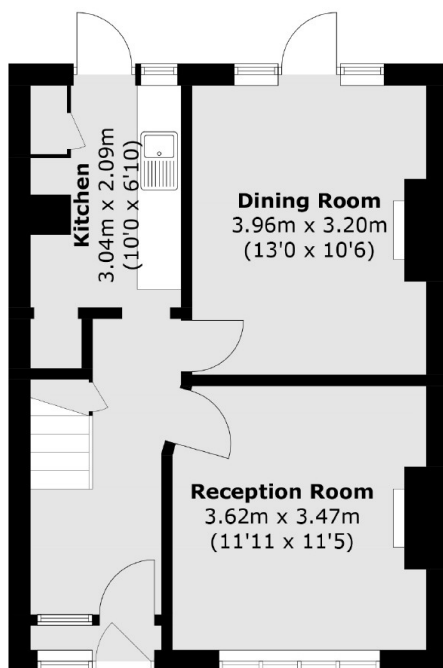
Features

- Three Bedrooms
- Scope To Extend (STPP)
- No Onward Chain
- Private Garden
- 1930s Build
- Needs Modernisation

Grove Crescent, Feltham, TW13



First Floor



**(Not Shown In Actual
Location / Orientation)**

Ground Floor

Total area (approx.): 88.6 sq. m (953.6 sq. ft)
Outbuilding area (approx.): 5.0 sq. m (53.8 sq. ft)