



Malthouse Drive, TW13

£665,000

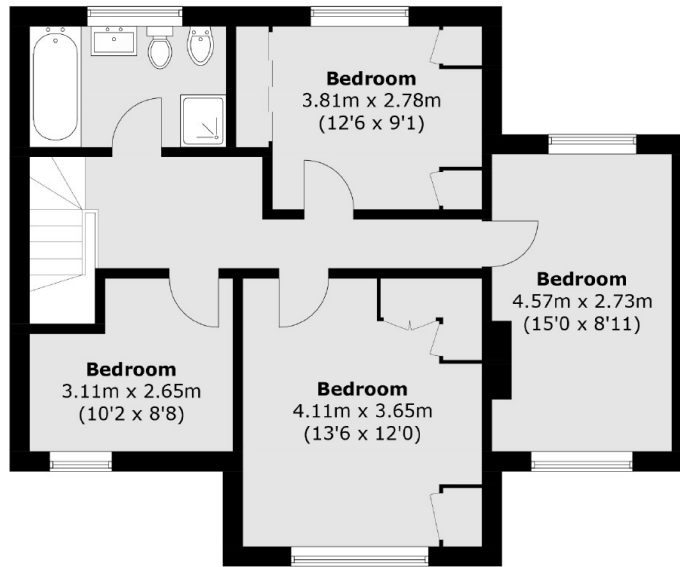
A fantastic detached house in good condition with four bedrooms, off-street parking for multiple cars and additional garage. We think it's perfect for the growing family with the added benefit of further potential to extend.

Malthouse Drive is a popular street due to its quiet nature and proximity to local shops and schools. The A316 is near by allowing easy access to London, the M3 and Heathrow airport. There are also strong bus links and Feltham Train Station nearby.

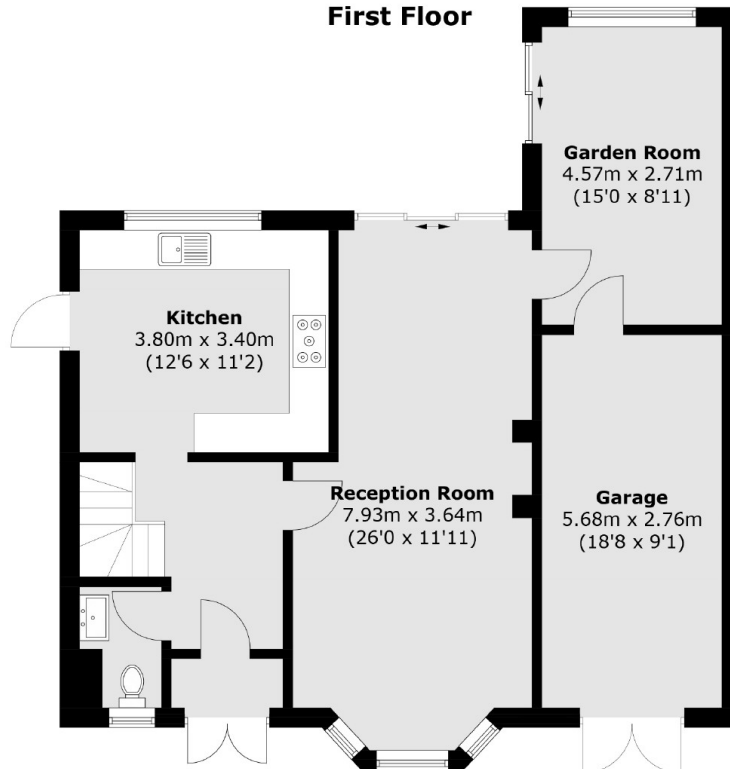
Features

- Detached
- Four Bedrooms
- Four Piece Family Bathroom
- Off Street Parking
- Garage
- Scope To Extend

Malthouse Drive, Feltham, TW13



First Floor



Ground Floor

Total area (approx.): 145.7 sq. m (1,568.3 sq. ft)