



Isabel Hill Close, TW12

£525,000

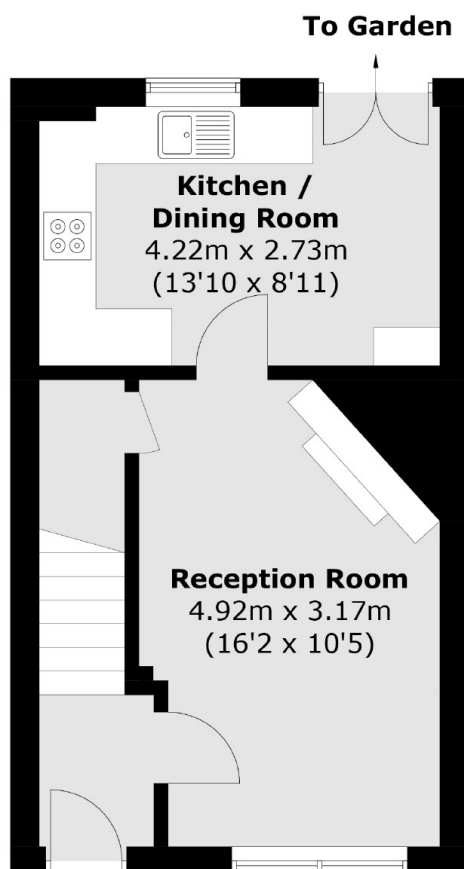
This modern two bedroom, two bathroom house is set in a small exclusive development opposite a picturesque stretch of River Thames and in the heart of Hampton village. There is scope to extend into the loft and addition of a conservatory as others have done (subject to planning permission).

Isabel Hill Close is excellent for the commuter with Hampton Station just down the road. The charming local shops of the Village, Waitrose supermarket, Bushy Park and several excellent local schools are also within a short work of this lovely development.

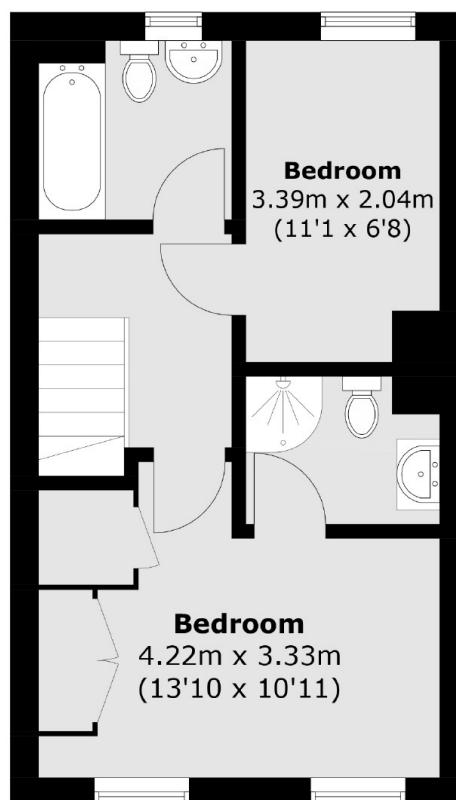
Features

- Two Bedrooms
- Two Bathrooms
- Designated Parking
- Landscaped Garden
- Scope To Extend (STPP)
- Close To Station

Isabel Hill Close, Hampton, TW12



Ground Floor



First Floor

Total area (approx.): 66.0 sq. m (710.4 sq. ft)