



## Laurel Road, TW12

£525,000

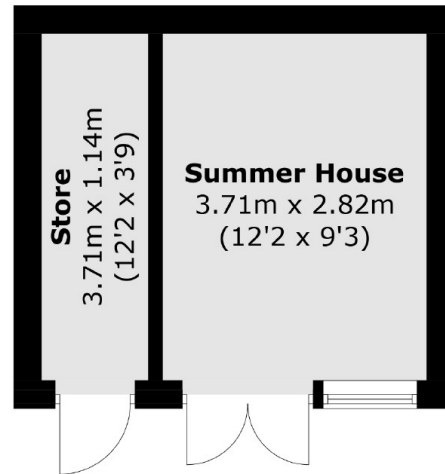
A very pretty two bedroom, Victorian split level maisonette that comes with a private garden and home office. Easy access to Bushy Park is a huge bonus and this is one to get really excited about.

Laurel Road is a prized location with gates directly in to Bushy Park and borders Teddington. Hampton Hill High Street, Fulwell station and a choice of excellent schools are all nearby.

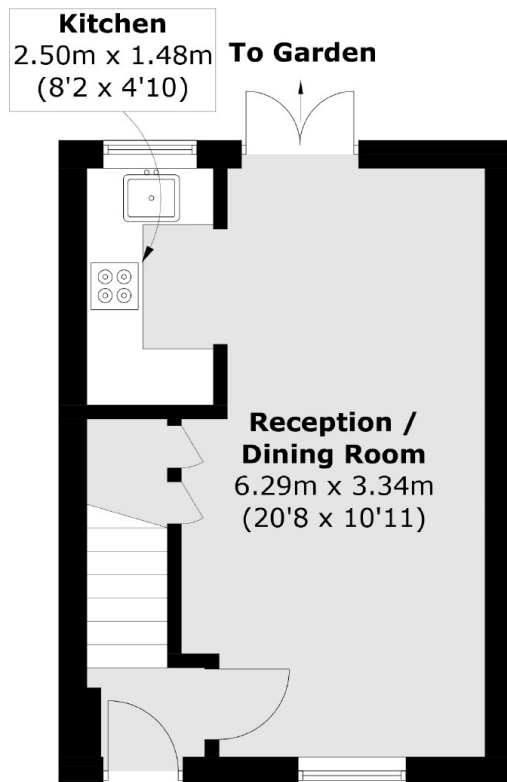
### Features

- Victorian
- Two Bedrooms
- Split Level
- Maisonette
- Private Garden
- Close To Bushy Park

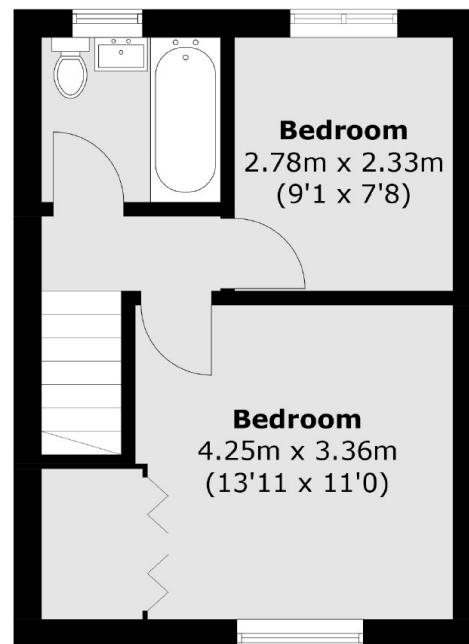
# Laurel Road, Hampton, TW12



(Not Shown In Actual  
Location / Orientation)



**Ground Floor**



**First Floor**

Total area (approx.): 54.3 sq. m (638.7 sq. ft)  
Outbuilding : 15.6 sq. m (167.9 sq. ft)