



Castle Way, TW13

£249,950

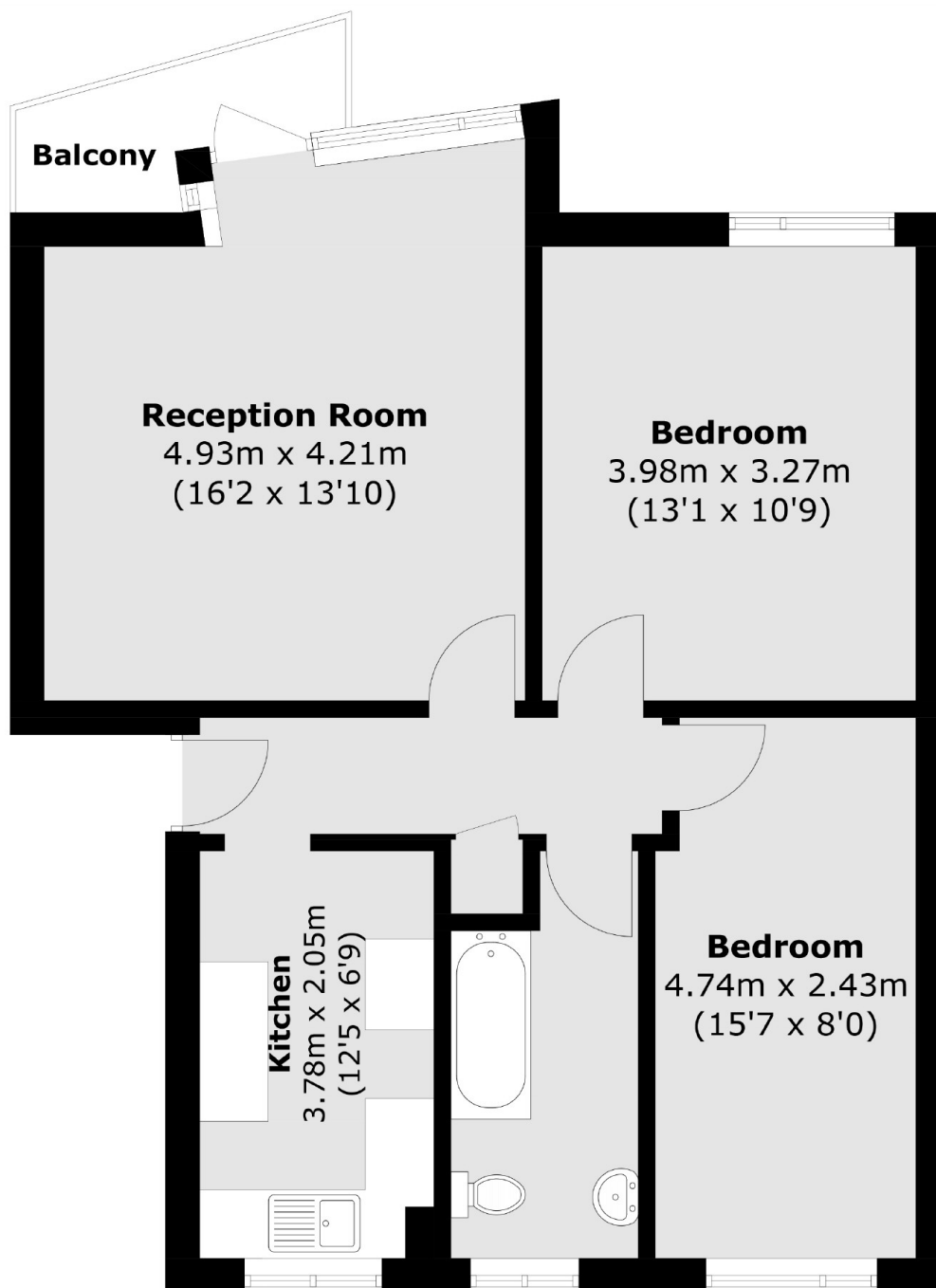
This is immaculate. It is a large two bedroom flat that is set within stunning communal gardens and coming with a garage and no onward chain. It is a great first time buy, investment or upsize from a one bed. We would love to show you in person.

Tudor Court is an impressive development set on the prestigious Hanworth Park Estate, an area once used by King Henry VIII as a hunting lodge. Surrounded by history, this property feels like a step back in time.

Features

- Two Bedrooms
- Top Floor Flat
- Recently Decorated
- Garage
- No Onward Chain
- Communal Gardens

Castle Way, Feltham, TW13



Total area (approx.): 63.3 sq. m (681.3 sq. ft)
Balcony : 2.8 sq. m (30.1 sq. ft)