



## Denison Road, TW13

£469,950

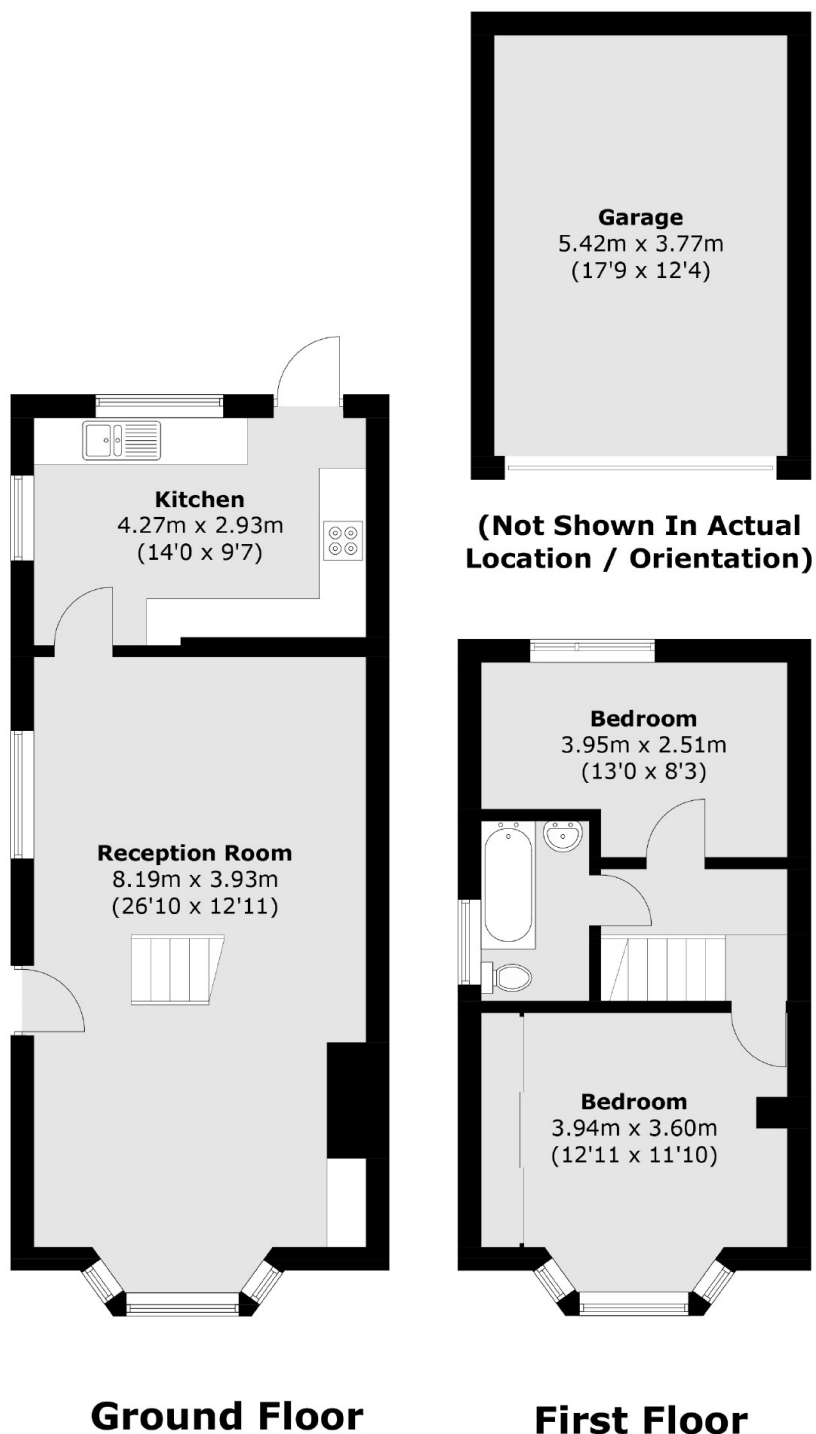
This house is a pleasant surprise! The garden is huge and gives you plenty of space to further extend (subject to planning permission). We would love to show you the property itself so please do drop us a quick call.

Denison Road is a popular and quiet residential road which is close to brilliant local schools and has easy access for the A316 and Heathrow Airport. The road is also surrounded by green open spaces.

### Features

- Two Bedrooms
- Semi Detached
- Huge Garden
- Scope To Extend (STPP)
- Off Street Parking
- Garage

# Denison Road, Feltham, TW13



Total area (approx.): 77.7 sq. m (836.3 sq. ft)  
Garage : 20.4 sq. m (219.6 sq. ft)