



Wordsworth Road, TW12

£550,000

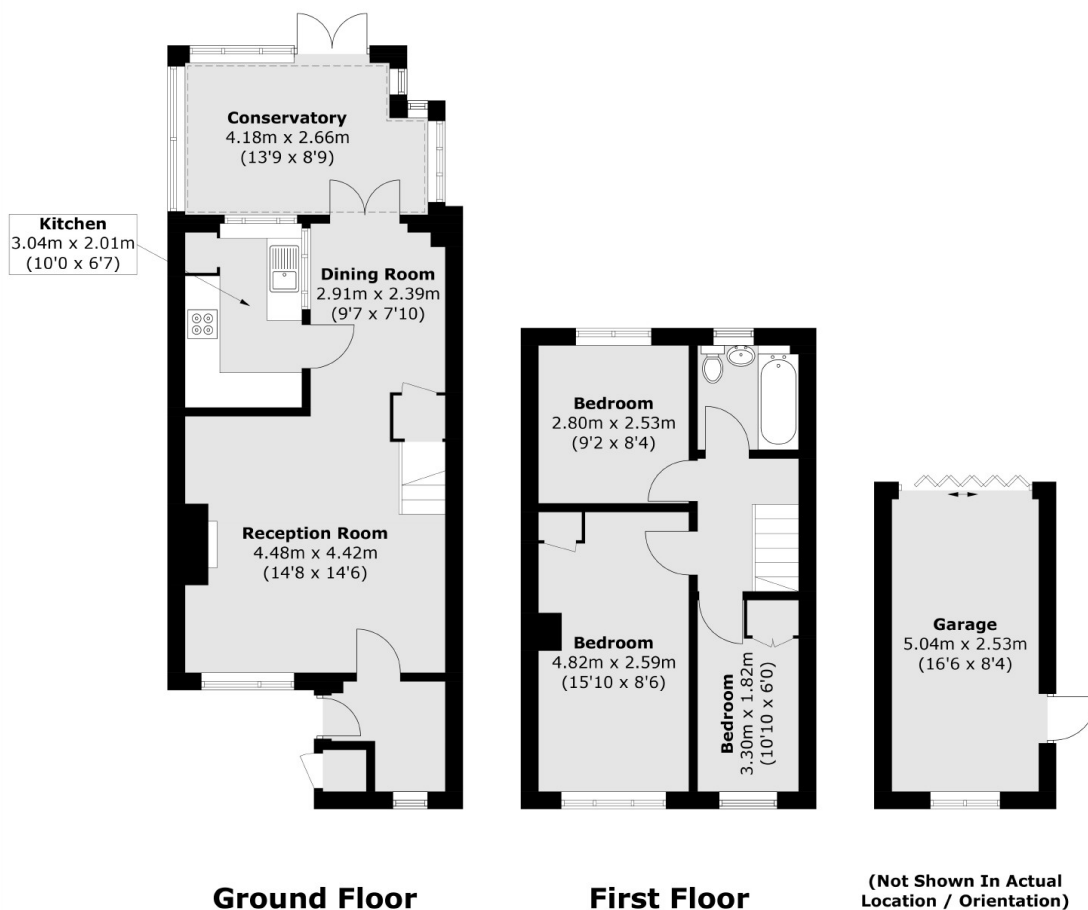
This makes the perfect family home - a three bedroom house with room to further extend (STPP). It comes with a garage, private garden and we would love to show you in person.

Wordsworth Road is located within the popular 'Poets' development in Hampton, a choice of state and private schools are all within walking distance. Bus routes, local parks, Hampton High Street, and Bushy Park are all nearby.

Features

- Three Bedrooms
- Mid Terraced
- Private Garden
- Garage
- Scope To Loft (STPP)
- Potential To Rear Extend

Wordsworth Road, Hampton, TW12



Total area (approx.): 83.7 sq. m (901.0 sq. ft)
Garage / External Cupboard: 13.8 sq. m (148.5 sq. ft)