



Batavia Road, TW16

£1,695 Per calendar month

With ample space throughout this two double bedroom, two bathroom flat is perfect for a professional couple or a small family. The property has two secure allocated parking spaces and the added bonus of a private patio.

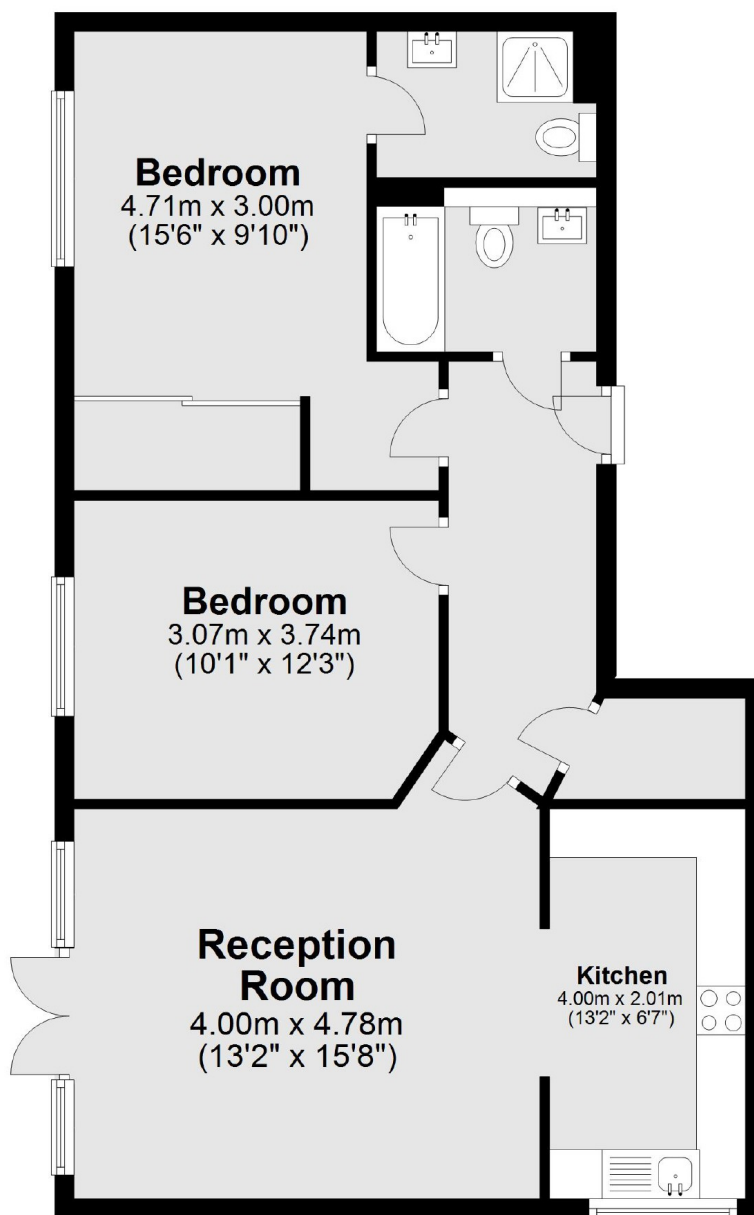
Raphael Court is small gated development opposite Kempton Park Racecourse with easy access to Sunbury Cross and Kingston Town Centre.

Features

- Two Double Bedrooms
- Fitted Wardrobes
- Two Parking Spaces
- Communal Gardens
- Modern Kitchen
- Private Patio

Batavia Road, Sunbury-On-Thames, TW16

Ground Floor



Total area: approx. 72.2 sq. metres (776.7 sq. feet)