



Park Close, TW12

£500,000

This is a ground floor maisonette which has recently been refurbished throughout to an excellent standard. There are bi-folding doors which lead onto the private garden and the property neighbours the ever popular Bushy Park!

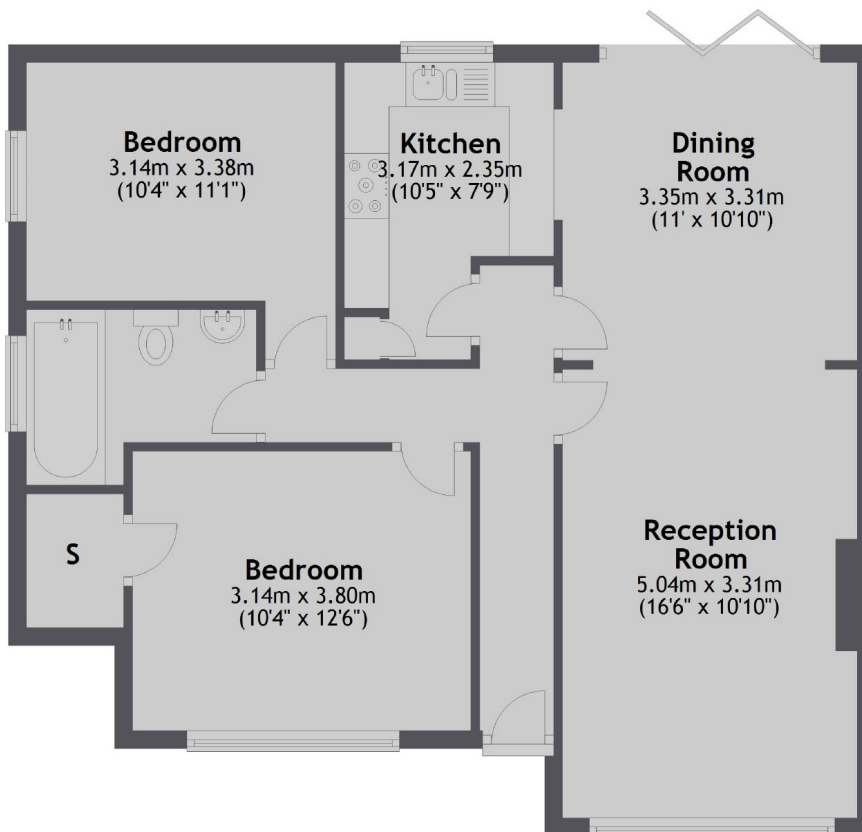
Park Close is a quiet cul-de-sac which lies adjacent to The Royal Bushy Park. Excellent transport links, local shops, and fantastic local schools are all within walking distance.

Features

- Two Double Bedrooms
- Share Of Freehold
- Private Garden
- Excellent Condition
- No Onward Chain
- Unallocated Parking

Park Close, Hampton, TW12

Ground Floor



Total area: approx. 71.0 sq. metres (763.7 sq. feet)