



Roper Crescent, TW16

£3,995 Per calendar month

A rarely available four bedroom house (plus an office) offering contemporary living within a beautiful development in Lower Sunbury. With two reception rooms, a well appointed kitchen and a driveway for parking, this family home is a must see.

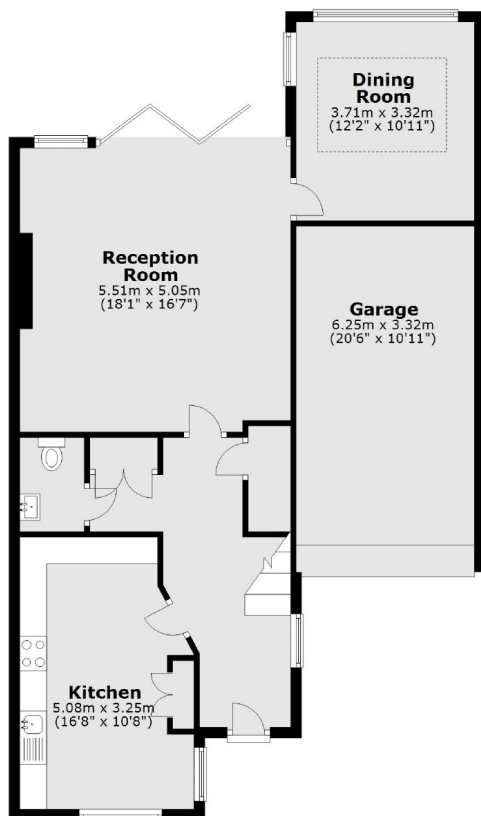
Roper Crescent is located just off of the Avenue in Lower Sunbury. Sunbury Park, the 'Walled Garden', the local village shops and the River Thames are all close by. Sunbury station is under half a mile away and provides a direct service into London Waterloo.

Features

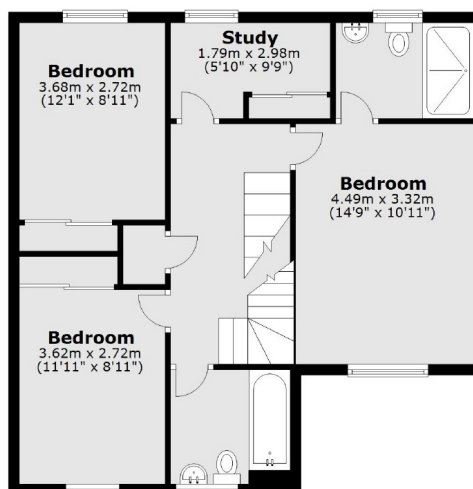
- Four Bedrooms
- Three Bathrooms
- Study
- Garage
- Off-Street Parking
- Landscaped Garden

Roper Crescent, Sunbury-On-Thames, TW16

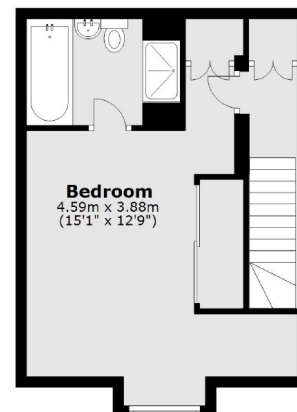
Ground Floor



First Floor



Second Floor



Total area: approx. 193.8 sq. metres (2086.0 sq. feet)