



Bloxham Crescent, TW12

£790,000

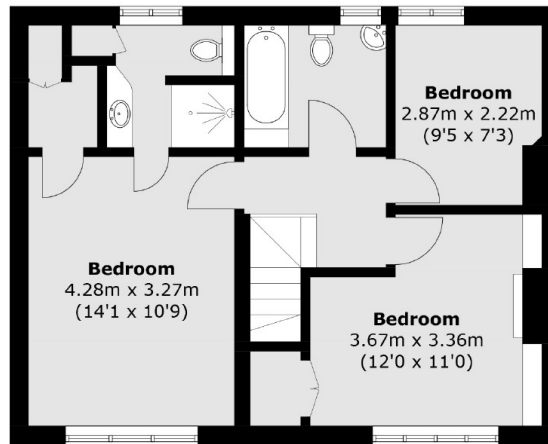
A four bedroom, three bathroom semi detached house that has been rear extended, providing over 1600 square feet of living space. It comes with a beautifully landscaped garden and is one that needs to be seen.

Located in central Hampton, the property is conveniently positioned for easy access to the train station, Waitrose, Hampton Green and the outstanding Hampton Infant School.

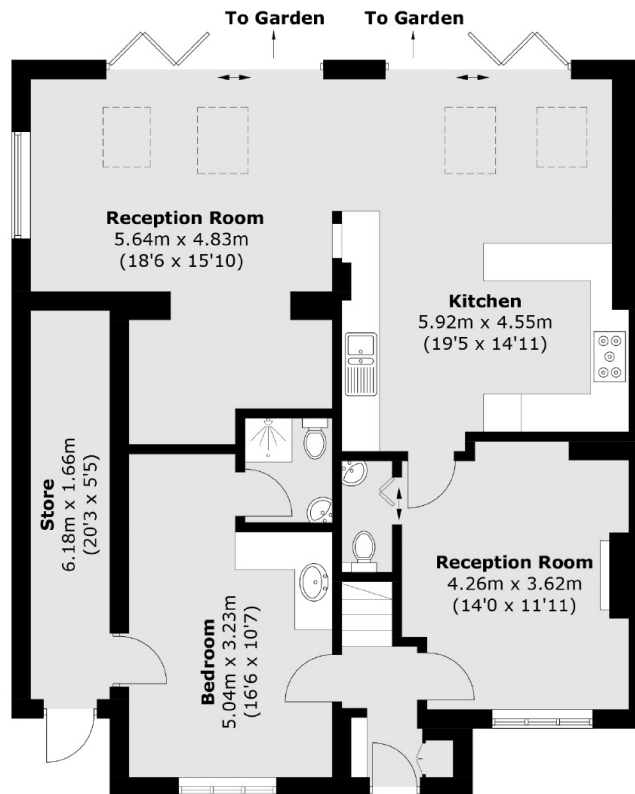
Features

Four Bedrooms
Three Bathrooms
Semi Detached
Over 1600 Square Feet
Landscaped Garden
Immaculately Presented

Bloxham Crescent, Hampton, TW12



First Floor



Ground Floor

Total area (approx.): 153.4 sq. m (1,651.2 sq. ft)