



Church Street, TW12

£319,950

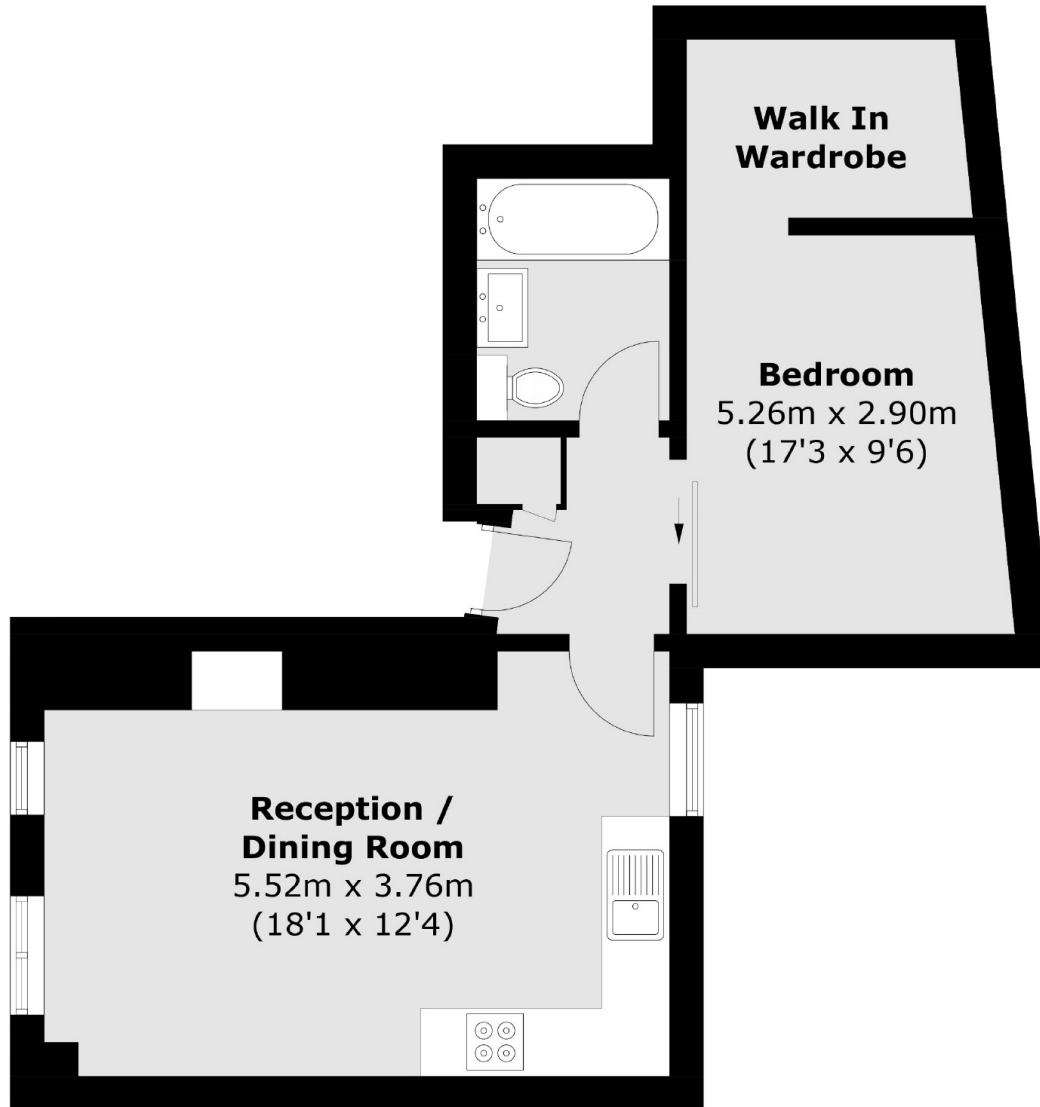
An impressive one bedroom first floor apartment, offered in excellent condition and positioned within a cobbled courtyard. If you're looking to be moments from both Hampton Village and Hampton Hill, then this is the property for you.

Church Street is one of the most historic roads in Hampton and designated conservation area. Surrounded by other beautiful period properties you are within walking distance to Hampton Village, Hampton Station, the River Thames and Hampton Court Palace.

Features

- One Bedroom
- Gated Development
- Communal WFH Space
- Bike Storage
- Immaculate Condition
- Walk-In Wardrobe

Church Street, Hampton, TW12



Total area (approx.): 42.1 sq. m (453.2 sq. ft)