



Orchard Farm Avenue, KT8

£485,000

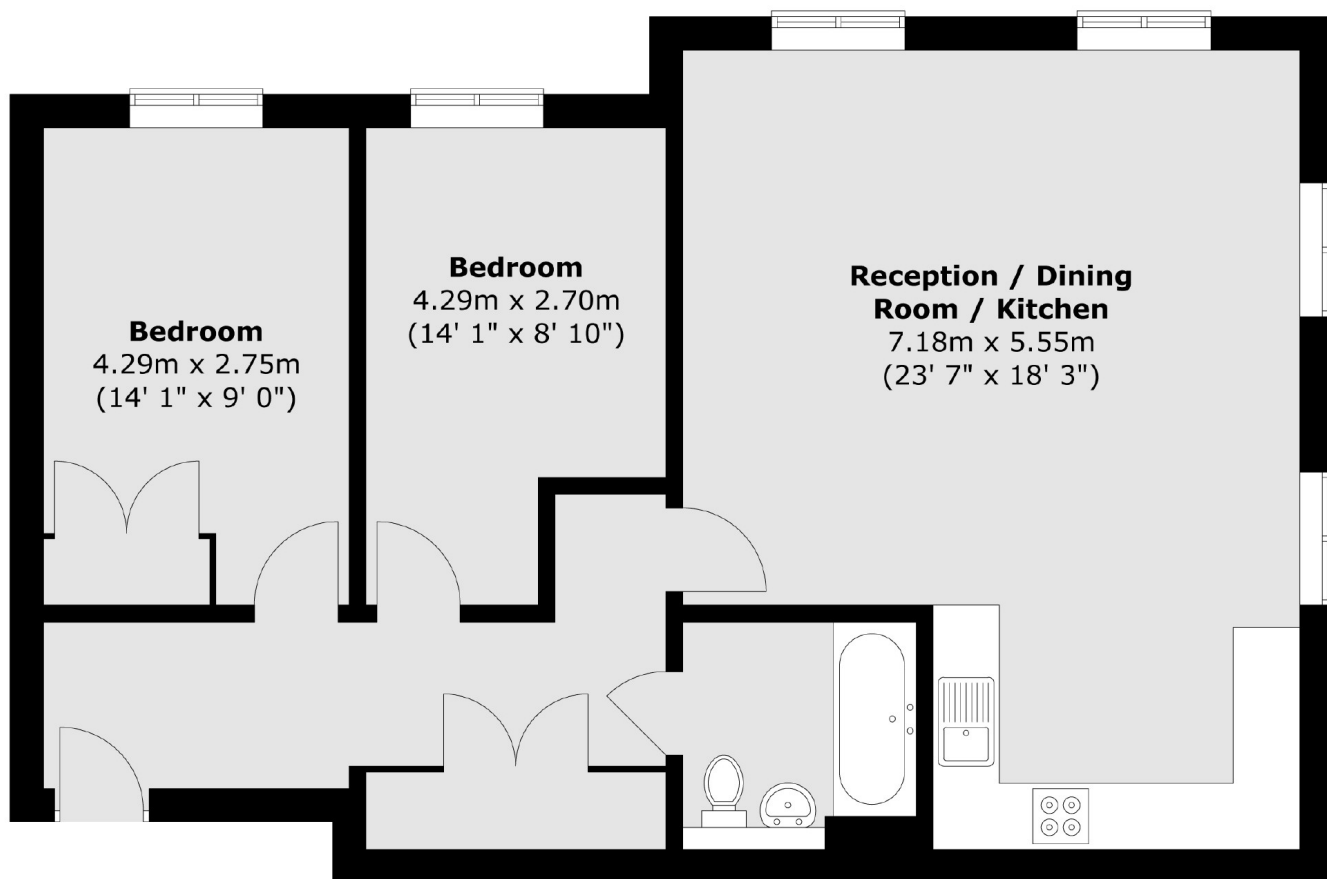
Wow! We are raving fans of this two bedroom first floor flat set within a modern development and featuring wonderful, large and bright rooms. We can't wait to arrange for you to view so please do drop us a call.

Orchard Farm Avenue is a quiet cul-de-sac in East Molesey close to the boutique shops and cafés of Bridge Road, catchment to outstanding schools, Hampton Court Palace and station providing easy access into London.

Features

- First Floor Flat
- Two Bedrooms
- Modern Development
- Very Bright
- Allocated Parking
- Immaculately Presented

Orchard Farm Avenue, East Molesey, KT8



Total area (approx.) : 75.9 sq. m (817 sq. ft)