



## South Road, TW13

£569,950

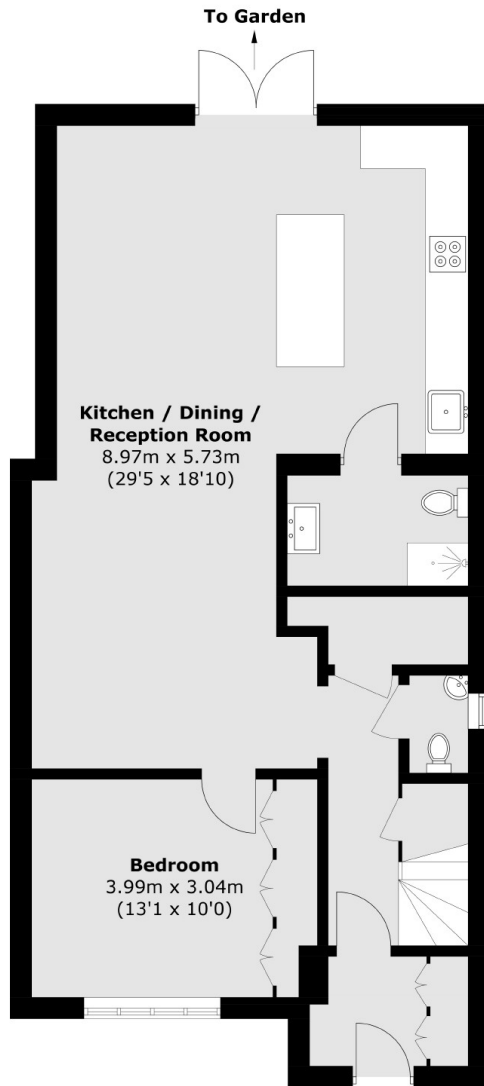
A four bedroom semi-detached family home, located on a popular residential road. The house offers nearly 1,300 sq ft of living space set over two floors, off-street parking and is presented in immaculate condition.

South Road is minutes from the A316 providing easy access to London, Heathrow and the South Coast via the M3. Hanworth Park and Hampton Common are also nearby.

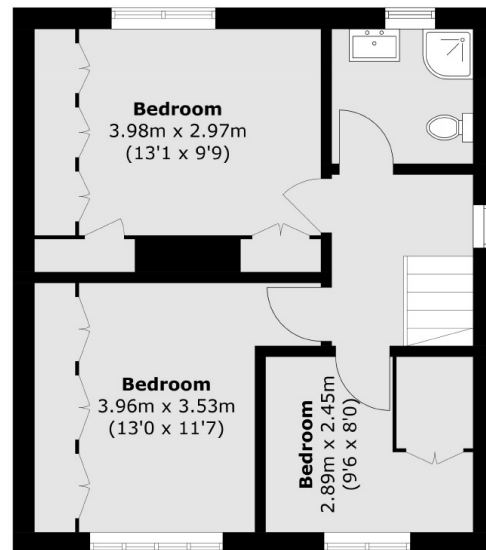
### Features

- Semi-Detached
- Four Bedrooms
- Two Bathrooms
- Off Street Parking
- Private Garden
- Excellent Condition

# South Road, Feltham, TW13



**Ground Floor**



**First Floor**

Total area (approx.): 117.6 sq. m (1,265.9 sq. ft)