



## Thames Close, TW12

£295,000

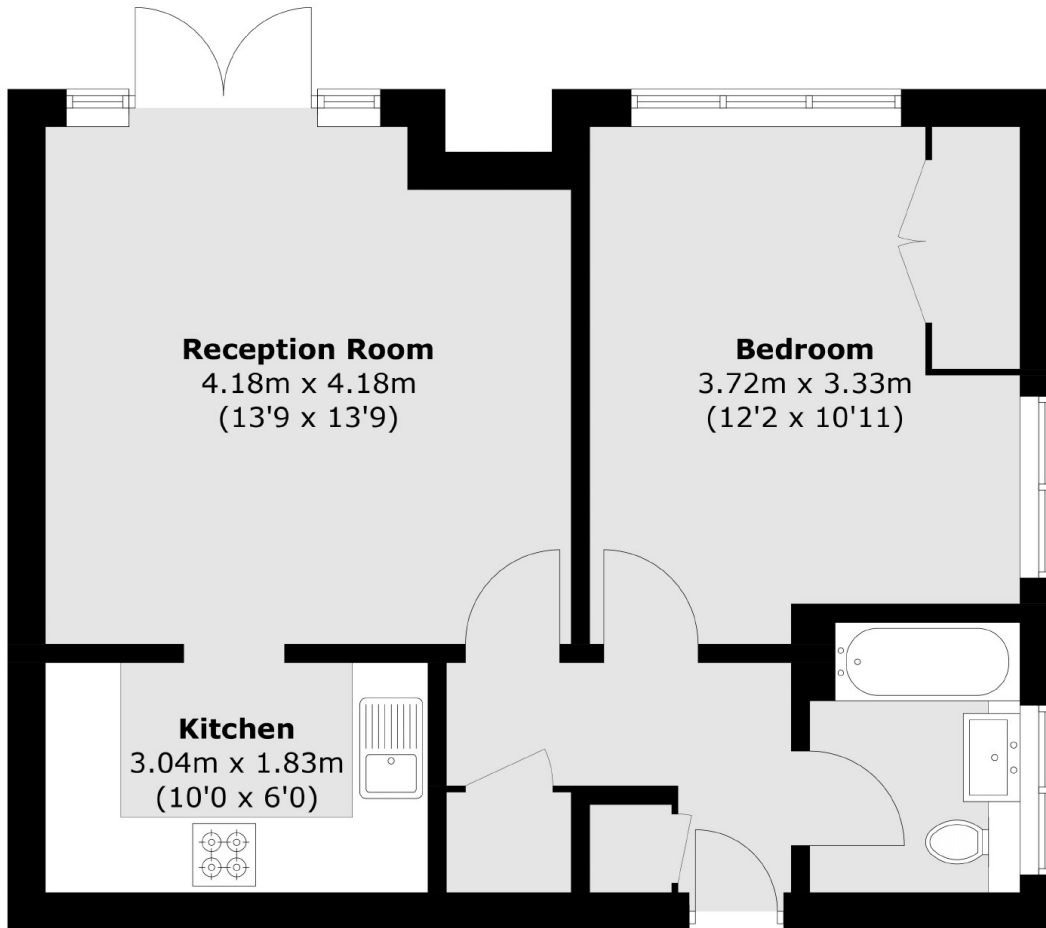
This is a well presented one bedroom ground floor flat which is perfect as a first time buy or downsize. Coming with direct river views and a share of freehold we are expecting this to be snapped up in no time.

Thames Close is a peaceful riverside development located in Hampton Village, close to Hampton Station, Bushy Park, Waitrose, shops and cafés. Hampton Court Palace and Kingston are nearby.

### Features

- One Bedroom
- Ground Floor Flat
- Riverside Location
- Gated Development
- Allocated Parking
- No Onward Chain

# Thames Close, Hampton, TW12



Total area (approx.): 46.9 sq. m (504.8 sq. ft)