



## The Avenue, TW16

£4,995 Per calendar month

**Dexters**



## The Avenue, TW16

A four bedroom detached house with a large rear garden, off street parking and a garage. This spacious family home offers flexible living accommodation.

On the ground floor there is a welcoming entrance hallway, a front reception room, a generous rear reception room which leads out to the garden and a kitchen and dining room with the added benefit of a utility room. In addition, there is also a downstairs cloakroom

On the first floor there are four large bedrooms and two bathrooms. To the front of the house there is off street parking for at least four cars and access to the garage. To the rear of the house there is a large South West facing garden with a patio area and an expansive lawn.

Amazing houses like this do not come on to the market often, especially on The Avenue, so give us a call straight away to arrange a viewing, to avoid missing out on this forever family home.

The Avenue is the premier road in Lower Sunbury, located in the centre of the village, the position is unbeatable! Sunbury Station, the local shops, riverside pubs, the River Thames and Sunbury Park are all close by.

### Features

- Detached
- Four Bedrooms
- Two Bathrooms
- Two Reception Rooms
- Garage
- Large Garden

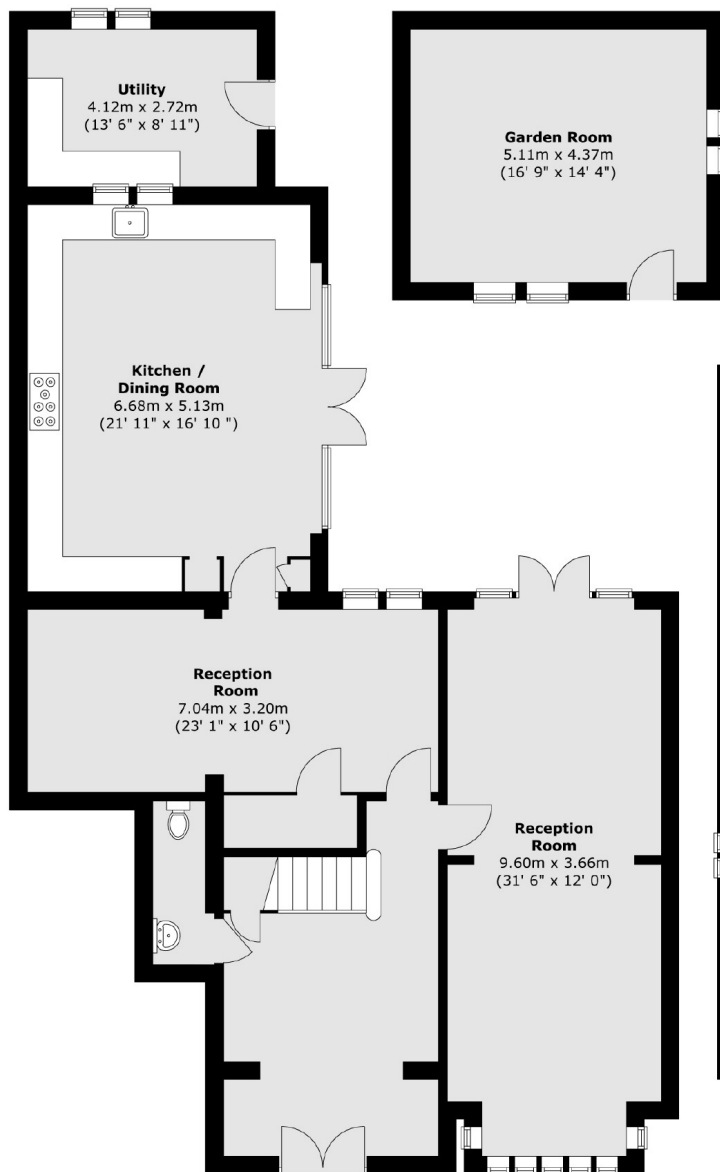




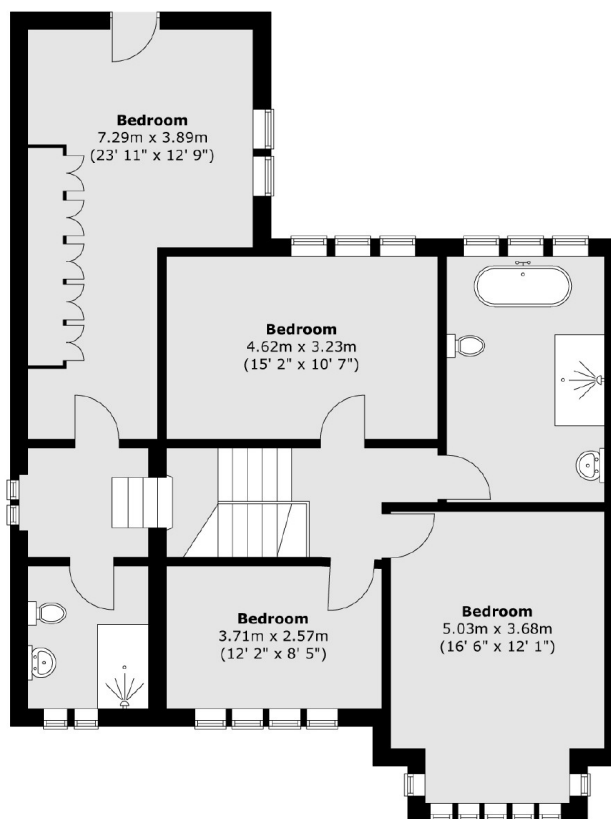


# The Avenue, Sunbury-On-Thames, TW16

## Ground Floor



## First Floor



Total area (approx.) : 217.8 sq. m (2344 sq. ft)  
Total utility area (approx.) : 11 sq. m (118 sq. ft)  
Total garden room area (approx.) : 22.5 sq. m (242 sq. ft)