



St. Georges Road, TW13

£2,600 Per calendar month

We love how pretty this four bedroom, semi detached house is. Wider than your typical Victorian house it is filled with original features and with scope to further extend. Please call to arrange to take a look!

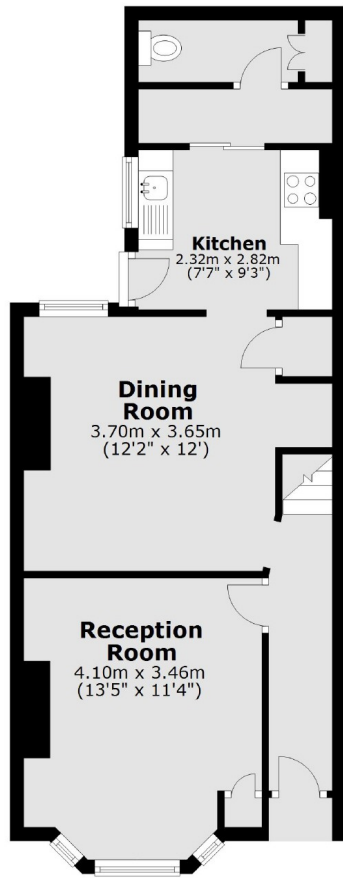
St. Georges Road is a quiet residential street on the borders of Hampton and Hanworth, and has excellent transport links for Heathrow and Feltham town centre with its fast trains to London Waterloo.

Features

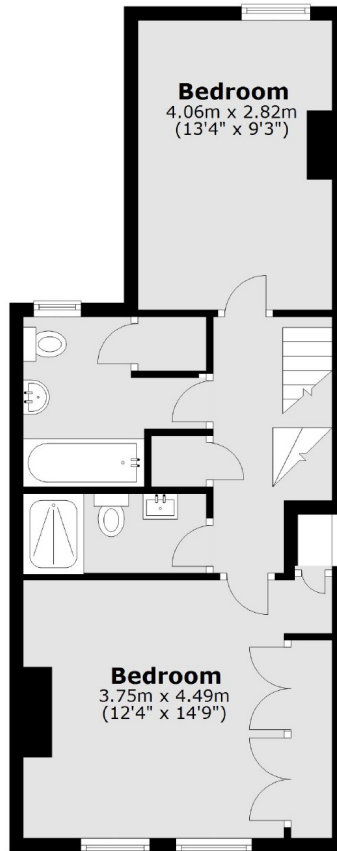
- Victorian Family House
- Four Bedrooms
- Semi Detached
- Private Garden
- Spacious Reception Room
- Dining Room

St. Georges Road, Hanworth, TW13

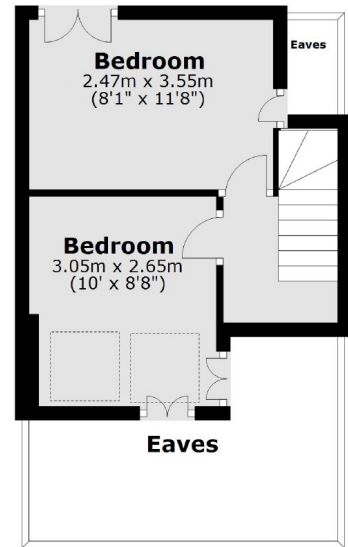
Ground Floor



First Floor



Second Floor



Total area: approx. 122.2 sq. metres (1315.1 sq. feet)