



Station Road, TW12

£450,000

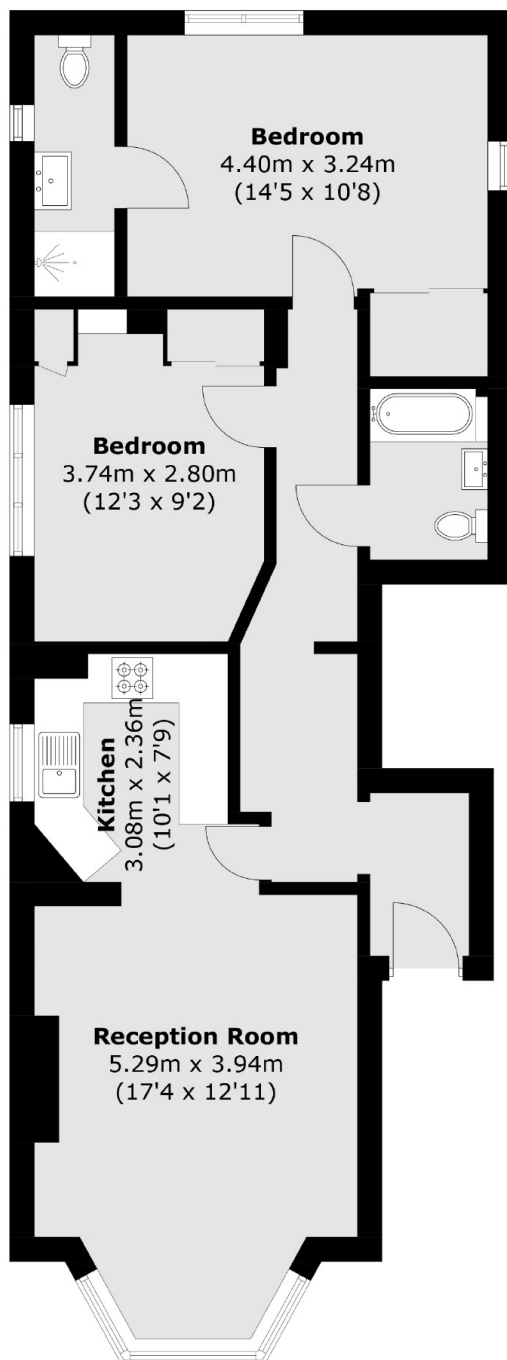
This spacious two bedroom ground floor flat offers nearly 800 square feet of living space and comes with an allocated parking space and a long lease. The property also has high ceilings and two bathrooms.

Situated just on Station Road, close to local shops and directly opposite Hampton Train station. Bushy Park and Hampton Open Air Pool are within a short walk.

Features

- Victorian Conversion
- Ground Floor Flat
- Two Double Bedrooms
- Allocated Parking
- Long Lease
- Communal Garden

Station Road, Hampton, TW12



Total area (approx.): 73.5 sq. m (791.1 sq. ft)