



Molemer Road, KT8

£1,550,000

Waterview





A beautiful, five bedroom detached family home on this sought after river road with south facing gardens backing onto this picturesque stretch of The River Mole.

Molemer Road is a pretty, residential cul-de-sac running between The Rivers Ember and Mole within a short walk of East Molesey village.







Accommodation is made up of entrance hall, leading to an impressive open plan living space with a stylish kitchen with breakfast bar, dining area and living room with full width folding doors to the garden terrace. There is a utility and W.C., located off the kitchen. Also on the ground floor is a further reception room and guest double bedroom with en-suite.

On the first floor there are two double bedrooms, a further single and family bathroom. On the top floor there is a stunning principal bedroom with en-suite and Juliette balcony overlooking the river. To the front there is a driveway with off street parking. To the rear the decked terrace overlooks a pretty, lawned garden with a recently built riverside home office and approx 40ft mooring.

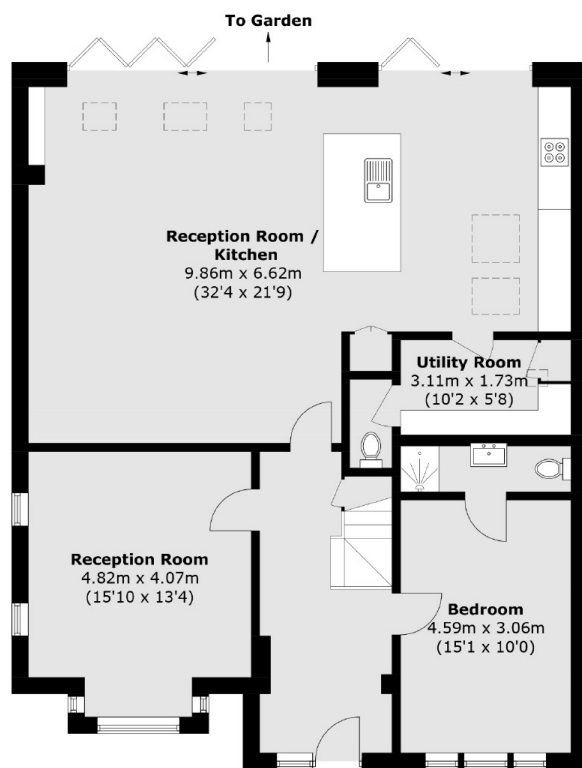
## Features

Family Home  
Five Bedrooms  
40ft Mooring  
South Facing Garden  
Beautifully Presented  
Home Office

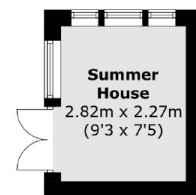




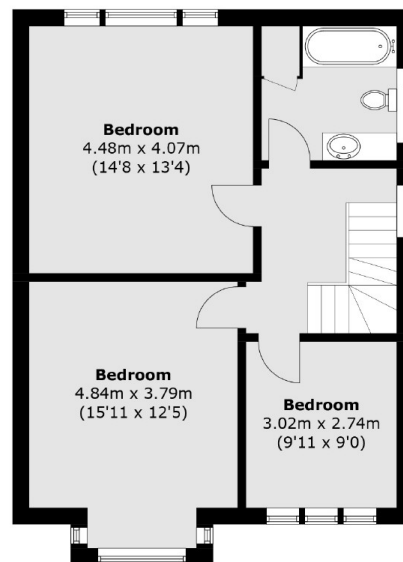
# Molemer Road, East Molesey, KT8



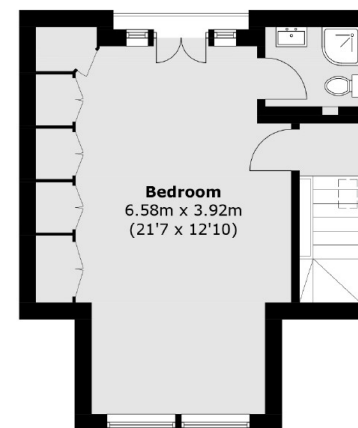
**Ground Floor**



(Not Shown In Actual  
Location / Orientation)



**First Floor**



**First Floor**

Total area (approx.): 212.1 sq. m (2,282.9 sq. ft)  
Summer House area (approx.): 6.6 sq. m (71.0 sq. ft)

## Contact

To arrange a viewing call our office on the number below or visit our website.



Energy Rating: D. We aim to make our particulars both accurate and reliable. However they are not guaranteed; nor do they form part of an offer or contract. If you require clarification on any points then please contact us, especially if you're traveling some distance to view. Please note that appliances and heating systems have not been tested and therefore no warranties can be given as to their good working order.



