



## Halliford Road, TW16

£3,150 Per calendar month

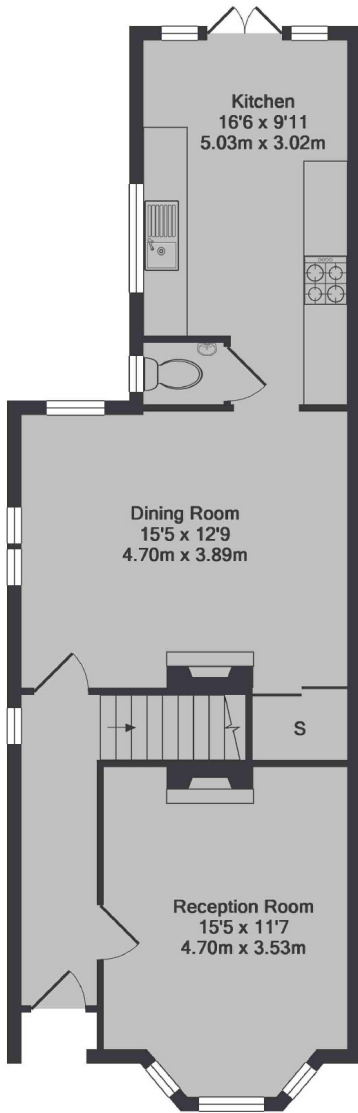
This beautiful period home finished to an excellent standard throughout is perfect for a family with plenty of living space, a large rear garden and moments from The River Thames.

Halliford Road is a popular road with the local village shops, Sunbury Park, the River Thames and the riverside pubs all close by.

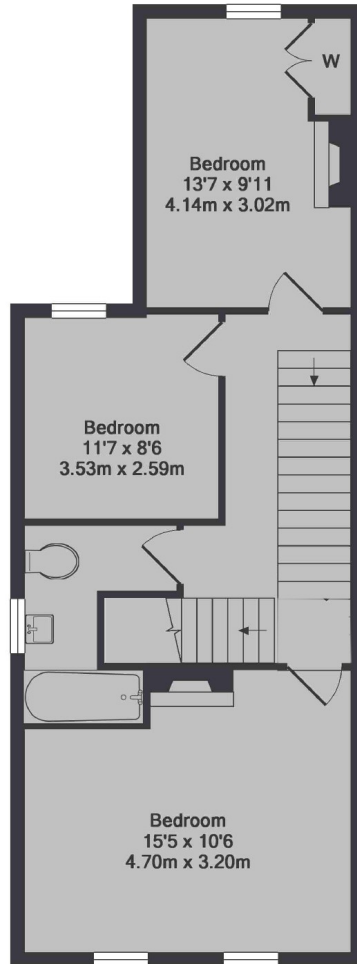
### Features

- Five Double Bedrooms
- Two Bathrooms
- Semi-Detached
- Sunny Rear Garden
- Modern Finish
- Ground Floor WC

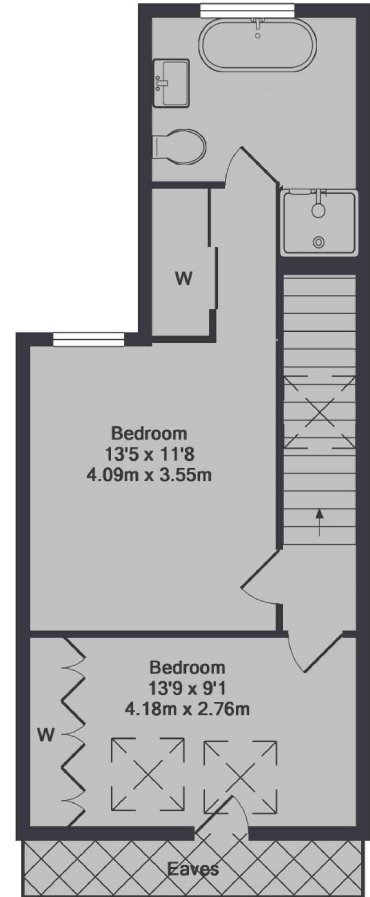
# Halliford Road, Sunbury-On-Thames, TW16



Ground Floor  
Approx. Floor  
Area 638 Sq.Ft.  
(59.3 Sq.M.)



1st Floor  
Approx. Floor  
Area 591 Sq.Ft.  
(54.9 Sq.M.)



2nd Floor  
Approx. Floor  
Area 492 Sq.Ft.  
(45.7 Sq.M.)

Halliford Road, Sunbury, TW16  
Total Approx. Floor Area 1721 Sq.Ft. (159.8 Sq.M.)