



Swan Road, TW13

£529,950

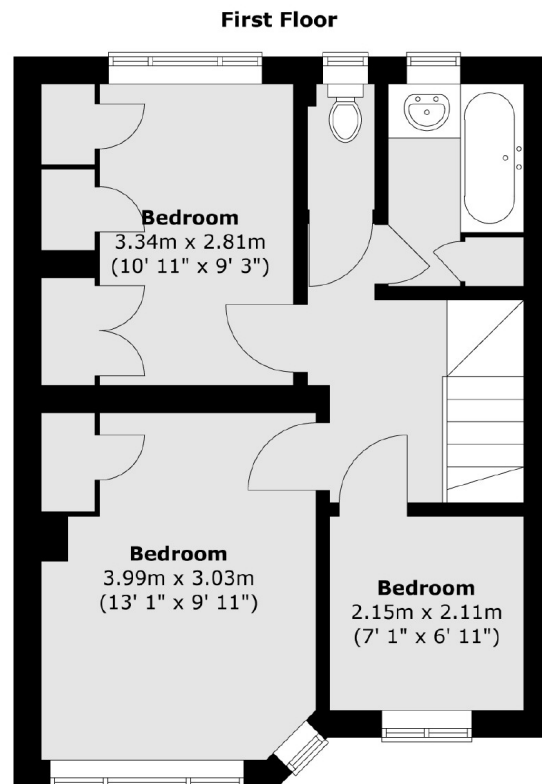
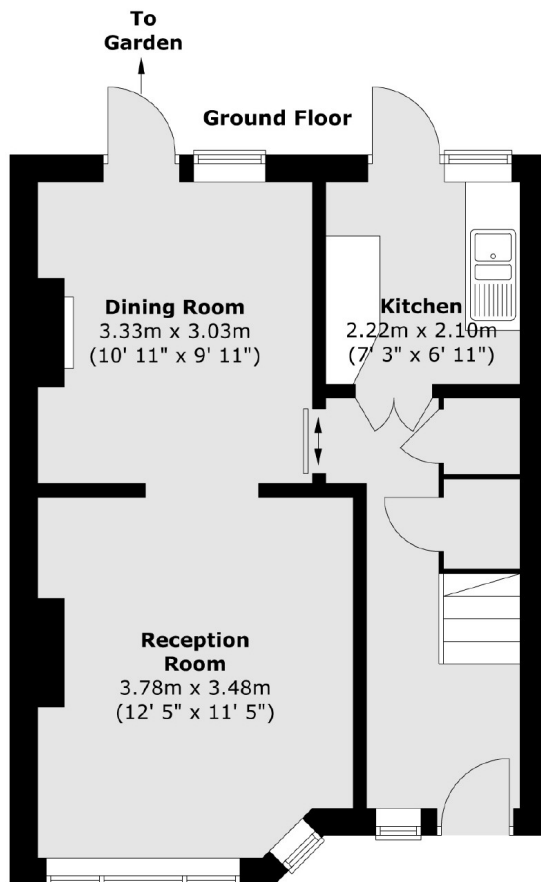
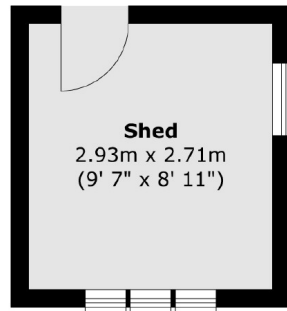
An exciting three bedroom house offering over 800 sq ft of living space set over two floors. There is further potential to extend the house subject to the usual consents, making this the perfect property for a growing family.

Swan Road is a popular residential street providing excellent transport links to the M3 and M25, with an array of shops on your doorstep.

Features

- Three Bedrooms
- Two Receptions
- Off Street Parking
- Scope To Extend
- No Onward Chain
- Private Garden

Swan Road, Feltham, TW13



Total area (approx.) : 77.9 sq. m (838 sq. ft)
Total shed area (approx.) : 8 sq. m (86 sq. ft)