



Milton Road, TW12

£899,950

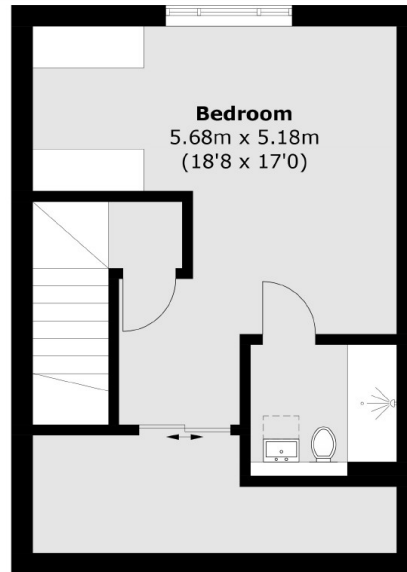
This is a modern three bedroom, two bathroom end of terrace house that is immaculately presented. It is also a rare opportunity to buy a property in this location with two off street parking spaces complete with EV charging. If you are looking for a beautiful home, with no work required, you have just found it!

Milton Road is a pretty and popular road, with shops, schools and the train station all a short walk away. Hampton Village really has everything you need on the doorstep.

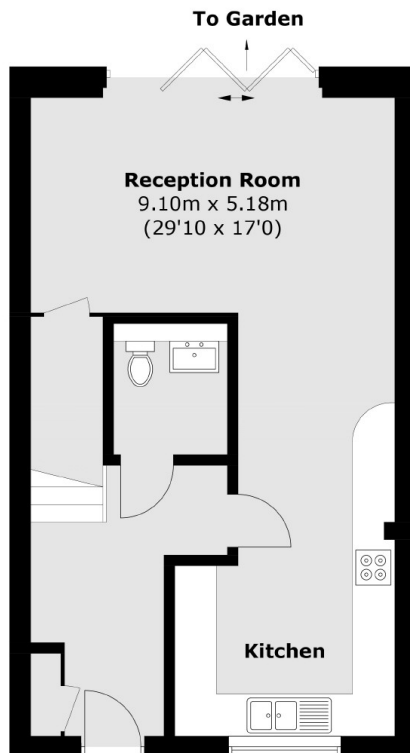
Features

- Three Bedrooms
- Two Bathrooms
- Recently Built
- Two Parking Spaces / EV Point
- Private Garden
- Open Plan Kitchen/Diner

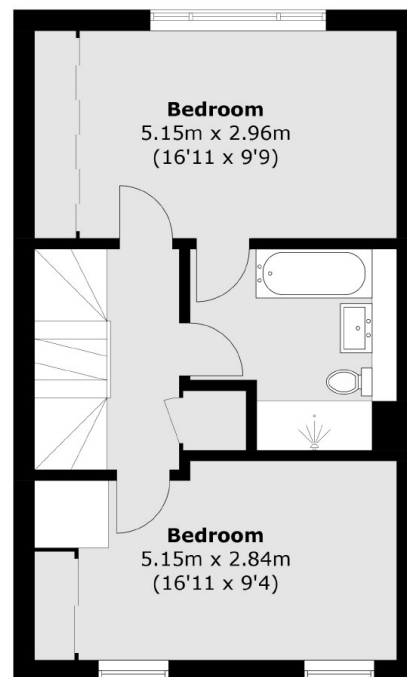
Milton Road, Hampton, TW12



Second Floor



Ground Floor



First Floor

Total area (approx.): 133.5 sq. m (1,437 sq. ft)