



Ormond Avenue, TW12

£4,500 Per calendar month

Dexters



Ormond Avenue, TW12

St James' House is a modern four bedroom semi-detached family home that offers flexible living space and stylish interior, ideally set in the heart of Hampton Village.

The rear kitchen/family/dining room is open-plan and certainly has the wow factor, this is a room great for entertaining in. There are bi fold doors onto the landscaped rear garden, creating that inside out feeling in the summer months.

The owners love their living room on the first floor, once the children are in bed they lock up downstairs and retreat into this comfortable room. There is a lovely terrace which you can enjoy a glass of wine on and watch the world go by.

There are four double bedrooms, two with en suite and a further family bathroom. The master suite is simply perfect, very spacious, a large walk in wardrobe, and smart en suite bathroom - this is a room the grown ups will enjoy.

Ormond Avenue is one of Hampton Villages most desirable residential roads, perfect for the modern family. Mum or Dad can jump on a train within a couple of minutes walk.

Features

- Study
- Downstairs WC
- Four Bedrooms
- Underfloor Heating
- High Spec Fittings
- Village Location



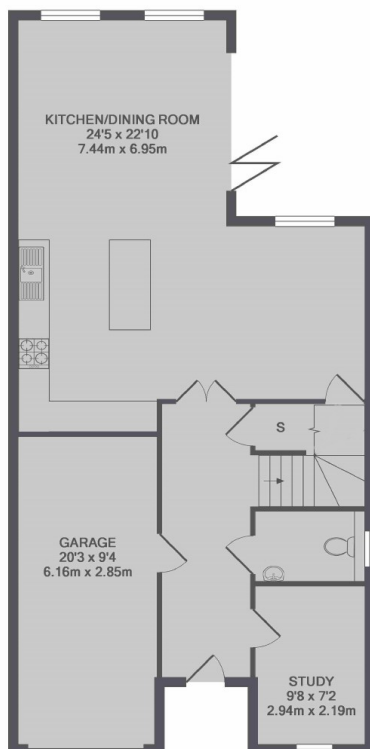




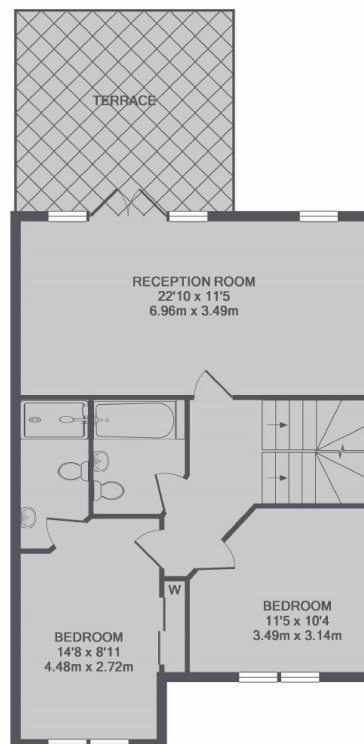
Ormond Avenue, Hampton, TW12



2ND FLOOR



GROUND FLOOR



1ST FLOOR

TOTAL APPROX. FLOOR AREA 2216 SQ.FT. (205.9 SQ.M.)