



Ormond Avenue, TW12

£2,550,000

Dexters



Ormond Avenue, TW12

Turn House is an individually styled, contemporary, five bedroom, detached Eco Home built by award winning QUAD architects. If you are looking for a house with the wow factor then look no further.

Accessed via a large reception hall, extensive living space over three floors defines this exceptional, individually designed home. At the heart of Turn House the kitchen/family/dining room flows freely to adjoining light-filled living room and study, while a studio/gym is accessed via a 'glass box' walkway.

Four bedrooms on the first floor, two with en suite shower rooms, are complemented by the magnificent second floor master suite, with dressing room and en suite with separate bath and shower.

The house looks out on a landscaped, West facing garden with a water feature and zoned perfectly for alfresco dining. The driveway is accessed via electric gates and it has off street parking for multiple cars.

Ormond Avenue is one of Hampton's finest roads. In the heart of the village you are moments from the cafés, shops and train station, with great schools on your doorstep including state and private.

Features

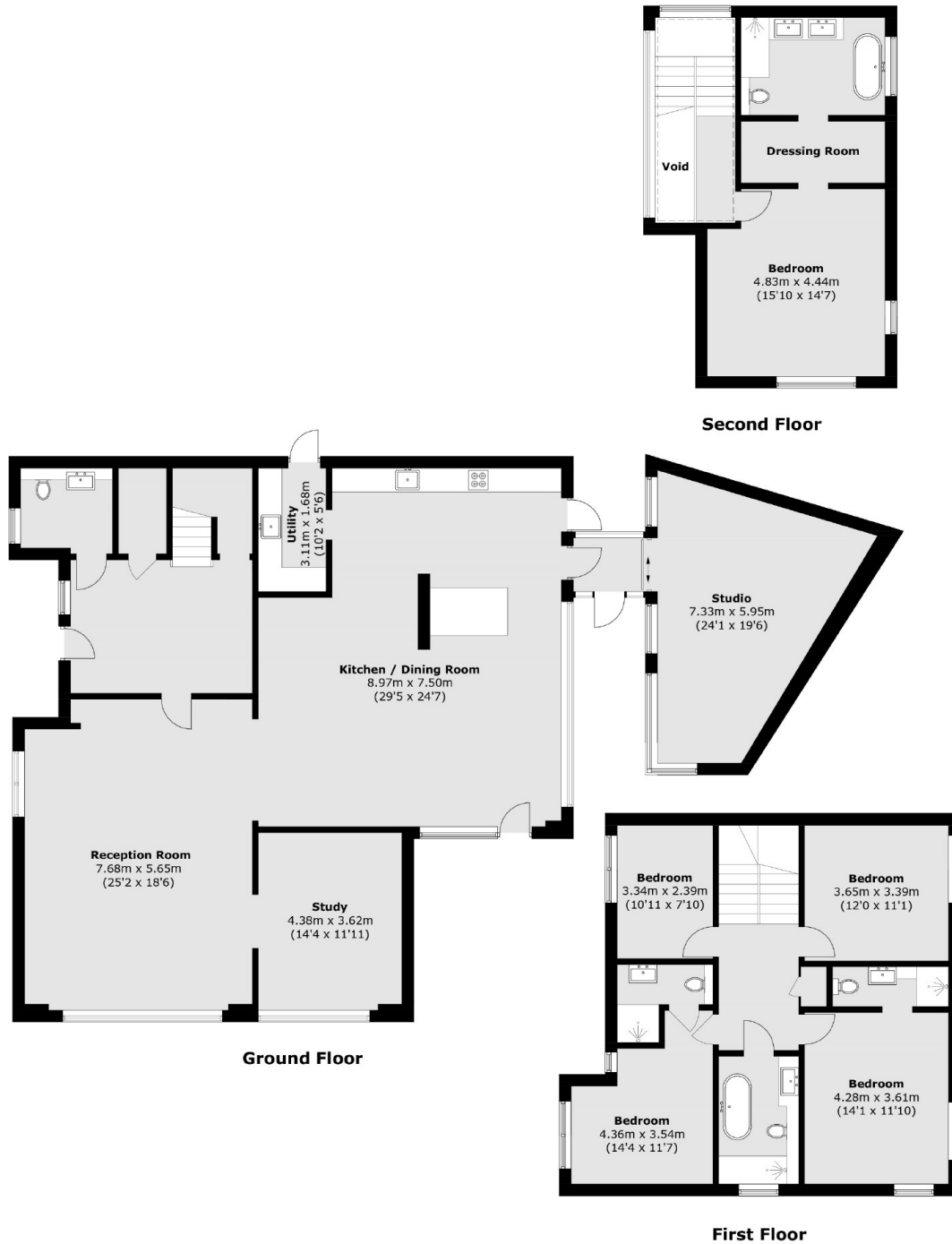
- Very High Spec Finish
- Five Bedrooms
- Four Bathrooms
- Detached
- Off Street Parking
- South West Facing Garden







Ormond Avenue, Hampton, TW12



Total area (approx.): 310.9 sq. m (3,346.5 sq. ft)
(Excluding Void)

Dexters

Hampton
93 Station Road
Hampton
TW12 2BD
Sales
020 8255 7777

Energy Rating: A. We aim to make our particulars both accurate and reliable. However they are not guaranteed; nor do they form part of an offer or contract. If you require clarification on any points then please contact us, especially if you're traveling some distance to view. Please note that appliances and heating systems have not been tested and therefore no warranties can be given as to their good working order.

 **RICS** | Regulated
Estate Agent
and Letting Agent

[dexters.co.uk](https://www.dexters.co.uk)