



Ormond Avenue, TW12

£2,725,000

Dexters



Ormond Avenue, TW12

Turn House is an individually styled, contemporary, five bedroom, detached Eco Home built by award winning QUAD architects. If you are looking for a house with the wow factor then look no further.

Accessed via a large reception hall, extensive living space over three floors defines this exceptional, individually designed home. At the heart of Turn House the kitchen/family/dining room flows freely to adjoining light-filled living room and study, while a studio/gym is accessed via a 'glass box' walkway.

Four bedrooms on the first floor, two with en suite shower rooms, are complemented by the magnificent second floor master suite, with dressing room and en suite with separate bath and shower.

The house looks out on a landscaped, West facing garden with a water feature and zoned perfectly for alfresco dining. The driveway is accessed via electric gates and it has off street parking for multiple cars.

Ormond Avenue is one of Hampton's finest roads. In the heart of the village you are moments from the cafés, shops and train station, with great schools on your doorstep including state and private.

Features

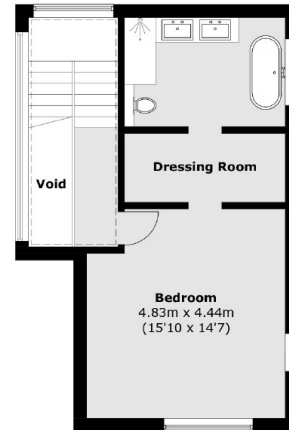
- Very High Spec Finish
- Five Bedrooms
- Four Bathrooms
- Detached
- Off Street Parking
- South West Facing Garden







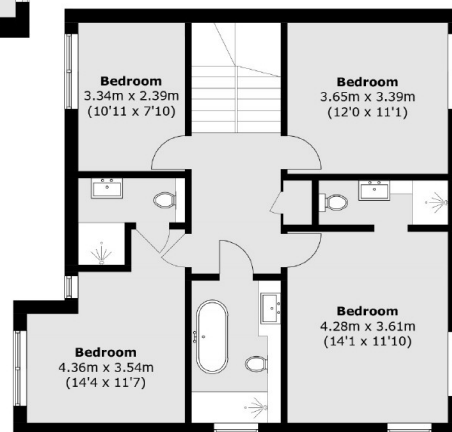
Ormond Avenue, Hampton, TW12



Second Floor



Ground Floor



First Floor

Total area (approx.): 310.9 sq. m (3,346.5 sq. ft)
(Excluding Void)