



Oldfield Road, TW12

£635,000

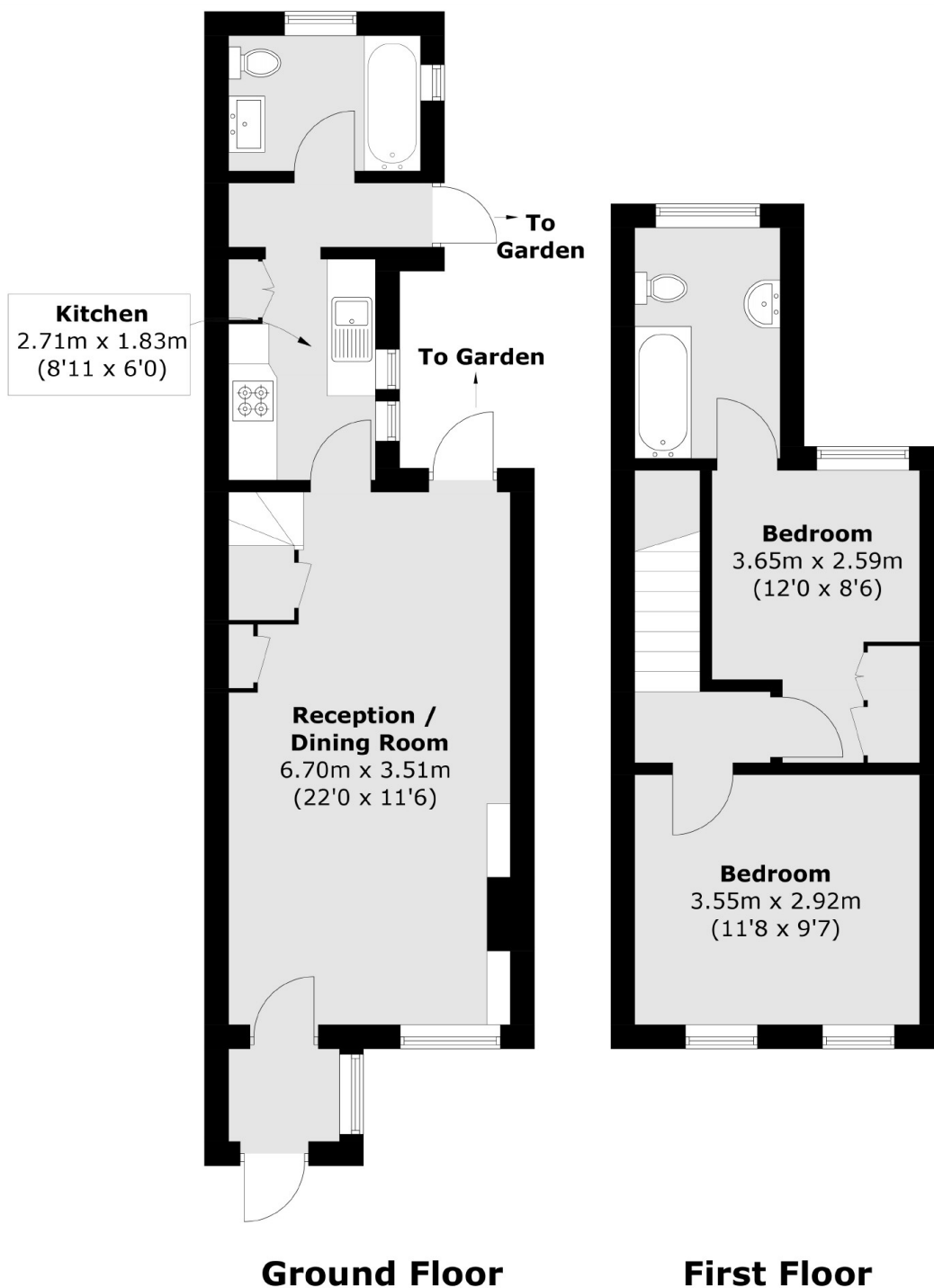
We are big fans of this charming, two bedroom cottage with planning permission granted to further extend and loft convert. It's lovely and bright throughout and we can't wait to show you.

Oldfield Road is a stroll away from Waitrose, Hampton Village Green and Hampton Station is just around the corner. Hampton has a number of fantastic local schools, with Bushy Park and the River Thames also nearby.

Features

- Two Bedrooms
- Victorian
- Private Garden
- Rear Access
- Village Location
- Planning Permission Granted

Oldfield Road, Hampton, TW12



Total area (approx.): 67.6 sq. m (727.6 sq. ft)